

# WOODSTONE

Interior Design

Tsarev Sad, 507



|    |    |                                     |
|----|----|-------------------------------------|
| 1  | 3  | <b>Project Information</b>          |
| 2  | 4  | <b>Layout</b>                       |
| 3  | 5  | <b>Design Concept</b>               |
|    | 9  | <b>Mood</b>                         |
| 4  | 10 | <b>Floor&amp;Ceiling finish</b>     |
| 5  | 13 | <b>Kitchen-Dining-Living room</b>   |
| 6  | 24 | <b>Entrance-Corridor-Cloak room</b> |
| 7  | 29 | <b>Master bedroom-WIC</b>           |
| 8  | 36 | <b>Master bathroom</b>              |
| 9  | 40 | <b>Second bedroom (Office)</b>      |
| 10 | 44 | <b>Second bathroom</b>              |
| 11 | 47 | <b>Powder room</b>                  |
| 12 | 50 | <b>Laundry-Pantry</b>               |
| 13 | 53 | <b>Ironmongery</b>                  |

# Project Information

## PROJECT INFO

316,8 sqm

Entrance

Living/Kithcen/Dining room

2 bedrooms

2 bathrooms + Powder room

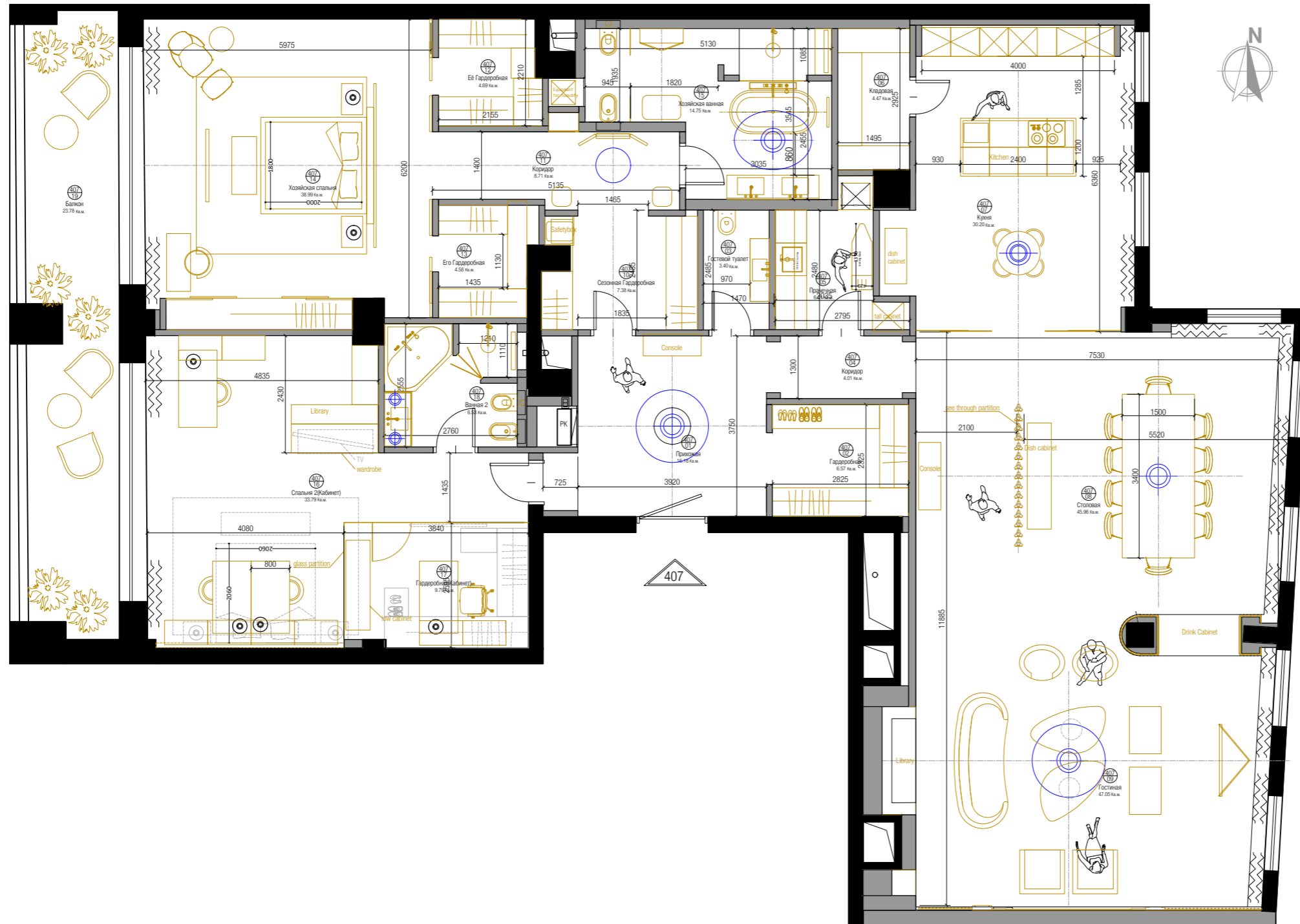
2 WIC + Seasonal WIC

Laundry

Pantry

Balcony

# Layout



| Tsarev Sad 407 |                    |        |
|----------------|--------------------|--------|
| Nr.            | Room               | Sq.m   |
| 01             | Entrance hall      | 16.18  |
| 02             | Cloak Room         | 6.57   |
| 03             | Powder Room        | 3.40   |
| 04             | Corridor           | 4.01   |
| 05             | Laundry            | 6.01   |
| 06             | Pantry             | 4.47   |
| 07             | Kitchen            | 30.20  |
| 08             | Dining             | 45.96  |
| 09             | Living room        | 47.05  |
| 10             | Seasonal WIC       | 7.38   |
| 11             | Corridor           | 8.71   |
| 12             | Her WIC            | 4.69   |
| 13             | His WIC            | 4.58   |
| 14             | Master Bedroom     | 38.99  |
| 15             | Master Bathroom    | 14.75  |
| 16             | Bedroom 2 (Office) | 33.79  |
| 17             | WIC(Office)        | 9.79   |
| 18             | Bathroom 2         | 6.53   |
| 19             | Terrace            | 23.78  |
| TOTAL (Net)    |                    | 316.84 |

| Царев-сад 407 |                      |        |
|---------------|----------------------|--------|
| №             | Помещение            | Кв.м.  |
| 01            | Прихожая             | 16.18  |
| 02            | Гардеробная          | 6.57   |
| 03            | Гостевой туалет      | 3.40   |
| 04            | Коридор              | 4.01   |
| 05            | Прачечная            | 6.01   |
| 06            | Кладовая             | 4.47   |
| 07            | Кухня                | 30.20  |
| 08            | Столовая             | 45.96  |
| 09            | Гостиная             | 47.05  |
| 10            | Сезонная Гардеробная | 7.38   |
| 11            | Коридор              | 8.71   |
| 12            | Её Гардеробная       | 4.69   |
| 13            | Его Гардеробная      | 4.58   |
| 14            | Хозяйская спальня    | 38.99  |
| 15            | Хозяйская ванная     | 14.75  |
| 16            | Спальня 2(Кабинет)   | 33.79  |
| 17            | Гардеробная(Кабинет) | 9.79   |
| 18            | Ванная 2             | 6.53   |
| 19            | Балкон               | 23.78  |
| ИТОГО (чист.) |                      | 316.84 |

## Design Concept I Greatness

---

As the name of project and interior design of common area, the sales centre has to show greatness to the customer.

What will be elements can give us the feeling of greatness into the space?

- «Dynamic ceiling design» gives us majestic sensation.
- «Big dimension of door and baseboard» makes us feel small
- «Brilliant material» makes gorgeous and magnificent.
- «Bright environment» makes spacious.



## Design Concept II

# Classic meets modern

---



To be coherent with the marketing of building and the mood of interior design of common area, the sales centre should have classical mood.

But considering that recently the customer's preference tend to modernize, we surely has to interprete classic to modern way.

-Reinterpretation of classical element

## Design Concept III Uniqueness and Surprise

---

The main role of sales centre is to encourage customers to image eventual their house and buy.

Thus, in one side the design has to be neutral to satisfy wider taste of customer but in an another side, it has to be unique to be different from other real estate and give a surprise.

So the design should be not too «particular» but not too «common».

We have to lead customers to ask the question «Where did they find this?»



## Design Concept IV Curve and Softness

---



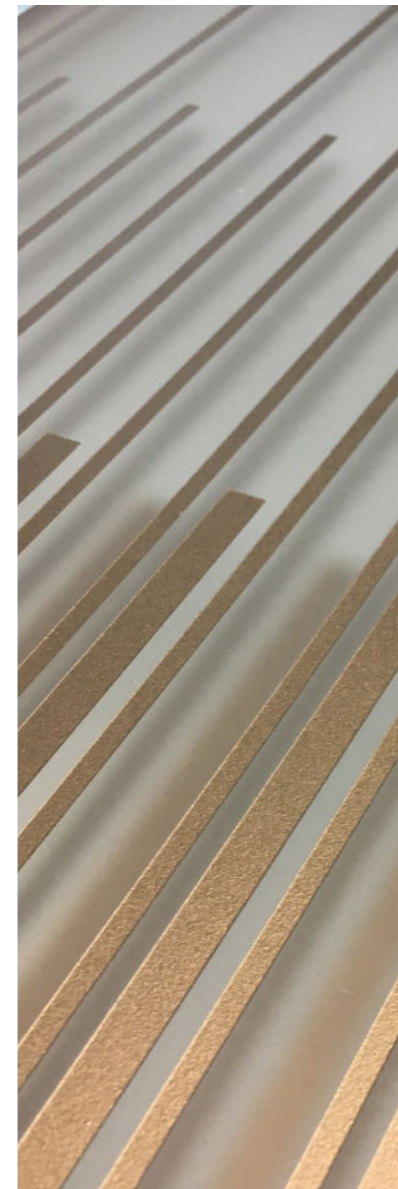
Curved shape makes more fashionable beyond cozy. It can lead also peculiar space for «topics» of show room..

Too many curved lines let immediately bored. We use them, keeping balance with sharped line.



# Mood

---

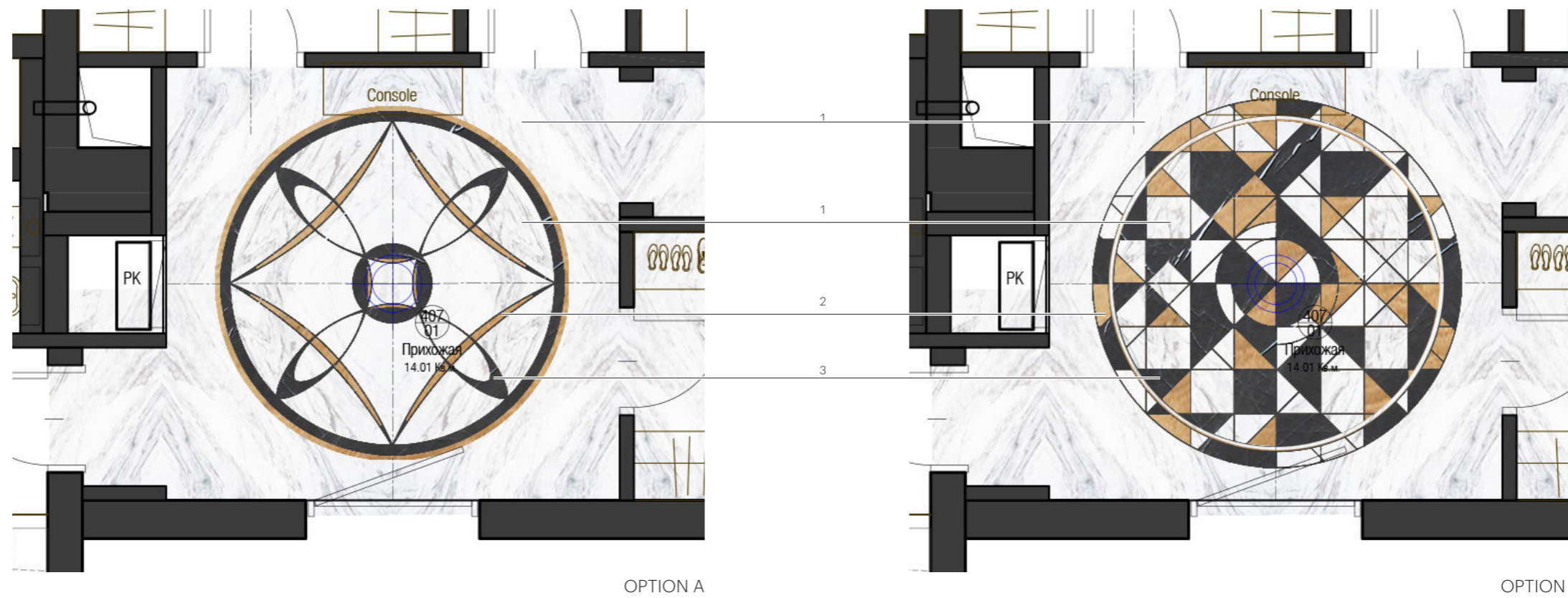


# Floor Finish

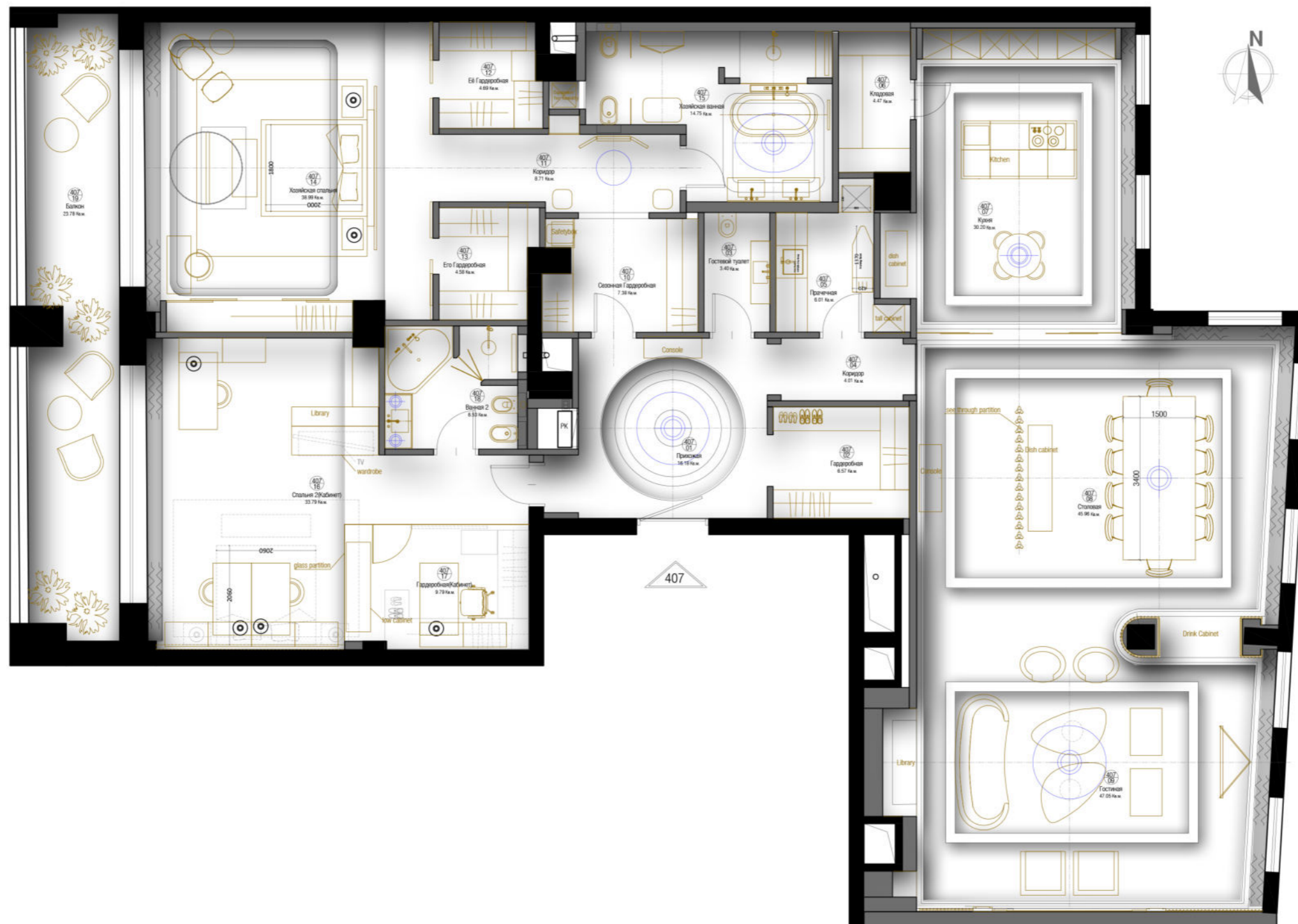


## Entrance floor

- 1 Marble «Ariston» or «Bianco Dolomiti» or similar, polished fin.
- 2 Travertine Velluto, polished fin.
- 3 Marble «Grey Stone», polished fin.



# Ceiling Finish





## Kitchen-Dining-Living

- 1 Tall kitchen column
- 2 Island kitchen
- 3 Snack table
- 4 Tall dish cabinet
- 5 Large plank oak parquet
- 6 Ceramic «Grey marble» Ariostea polished fin.
- 7 Partition in marble and galvanized metal
- 8 Low dish cabinet
- 9 Console
- 10 Dining table
- 11 Double face drink cabinet
- 12 Library
- 13 Sofa
- 14 Niche with glass shelves

# Mood (Kitchen area)

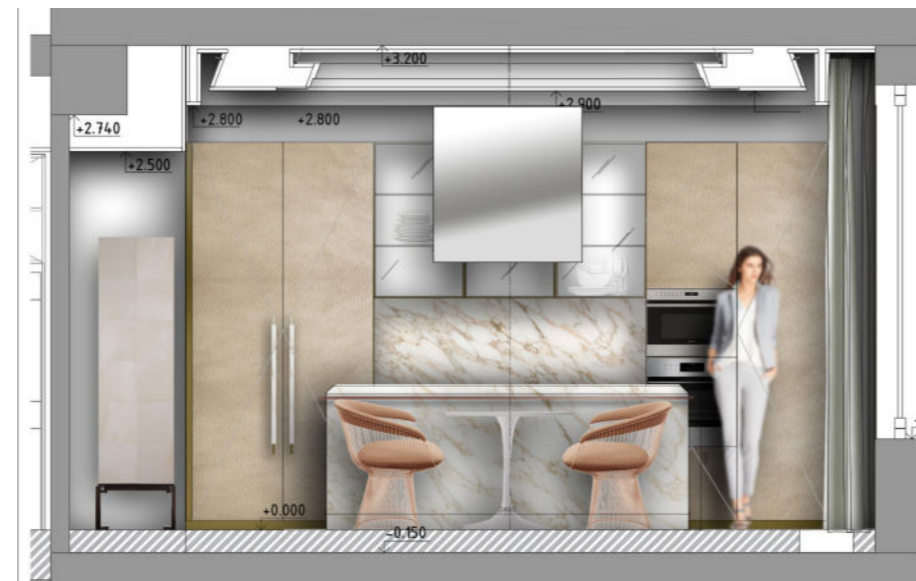


- 1 BRUSHED STAINED PARQUET
- 2 GYPSUM WALL PANELLING WHITE
- 3 LAYERED GLASS SLIDING DOOR
- 4 KITCHEN BESPOKE
- 5 SMALL TABLE «SAARIEN TABLE» BY KNOLL

- 6 ARMCHAIR «PLATNER CHAIR» BY KNOLL
- 7 GLASS PENDANT LIGHT «NEPTUNE» BY BELLA FIGURA
- 8 TALL CABINET BESPOKE



ELEVATION B

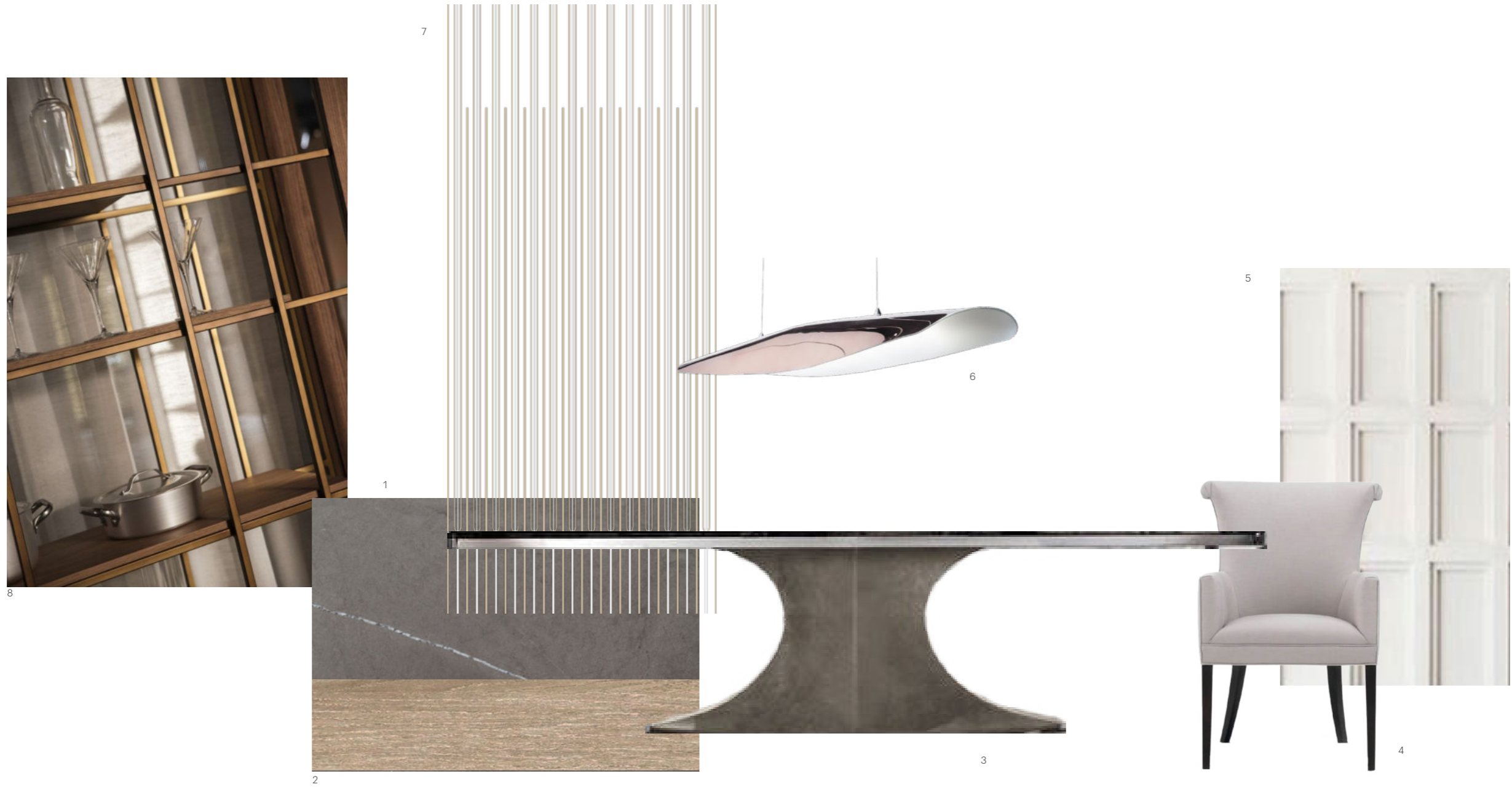


ELEVATION A



Inspiration image of glass door

# Mood (Dining area)



- 1 CERAMIC «GREY MARBLE» ARIOSTEA
- 2 BRUSHED STAINED OAK PARQUET
- 3 DINING TABLE «HUBERT» BY LONGHI
- 4 DINING CHAIR «CLASSICS ARM CHAIR» BY DECCA HOME
- 5 WHITE GYPSUM PANNELLING
- 6 PENDANT LIGHT «ALA» BY REFLEX
- 7 LAYERED GLASS SLIDING DOOR
- 8 PARTITION BESPOKE







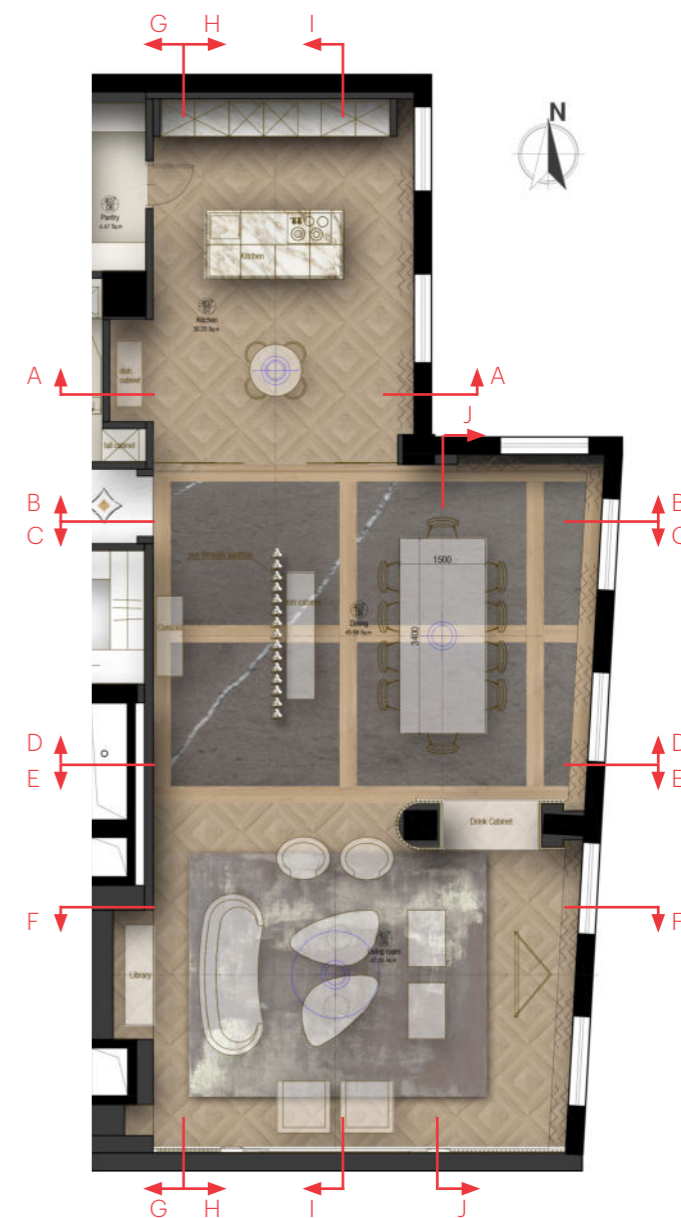
ELEVATION H



ELEVATION D



ELEVATION J



# Mood (Living area)



- 1 BRUSHED STAINED OAK PARQUET
- 2 COFFEE TABLE «GEHRY» BY LONGHI
- 3 ARMCHAIR «MAYA» BY BRABBU
- 4 SOFA LA FIBULE
- 5 WALL WORK IN GYPSUM OR TIMBER

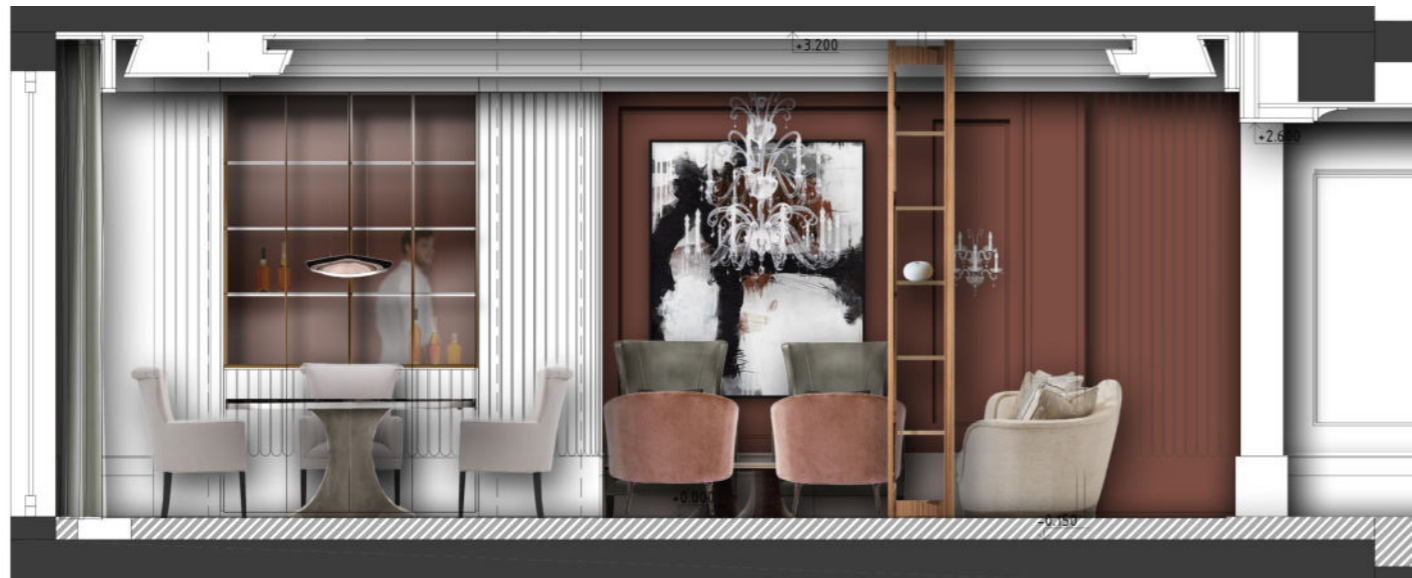
- 6 GYPSUM WALL PANELING
- 7 GLASS CHANDELIER «CANDELABRO» BY REFLEX
- 8 GLASS WALL SCONCE «CANDELABRO» BY REFLEX
- 9 ARMCHAIR «DUKUNO» BY BRABBU



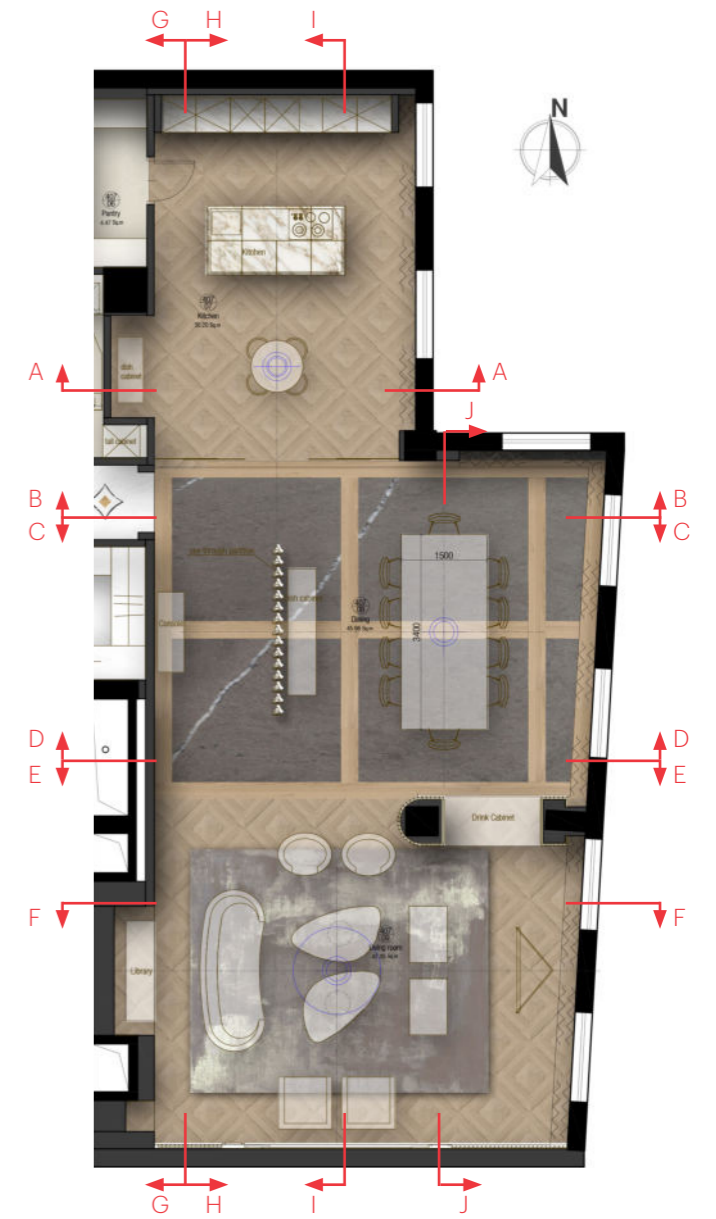




ELEVATION F



ELEVATION C





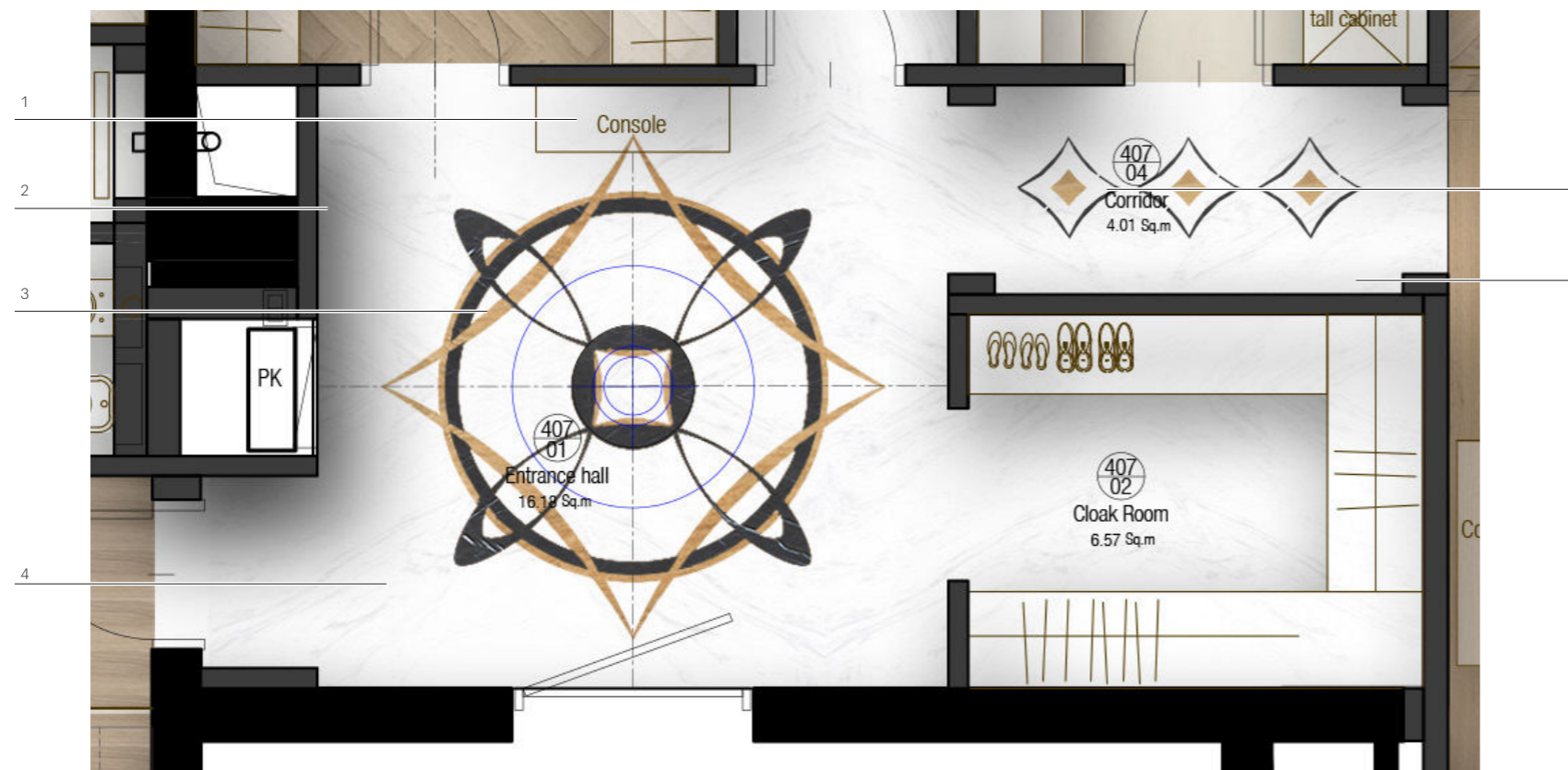
ELEVATION G



ELEVATION I

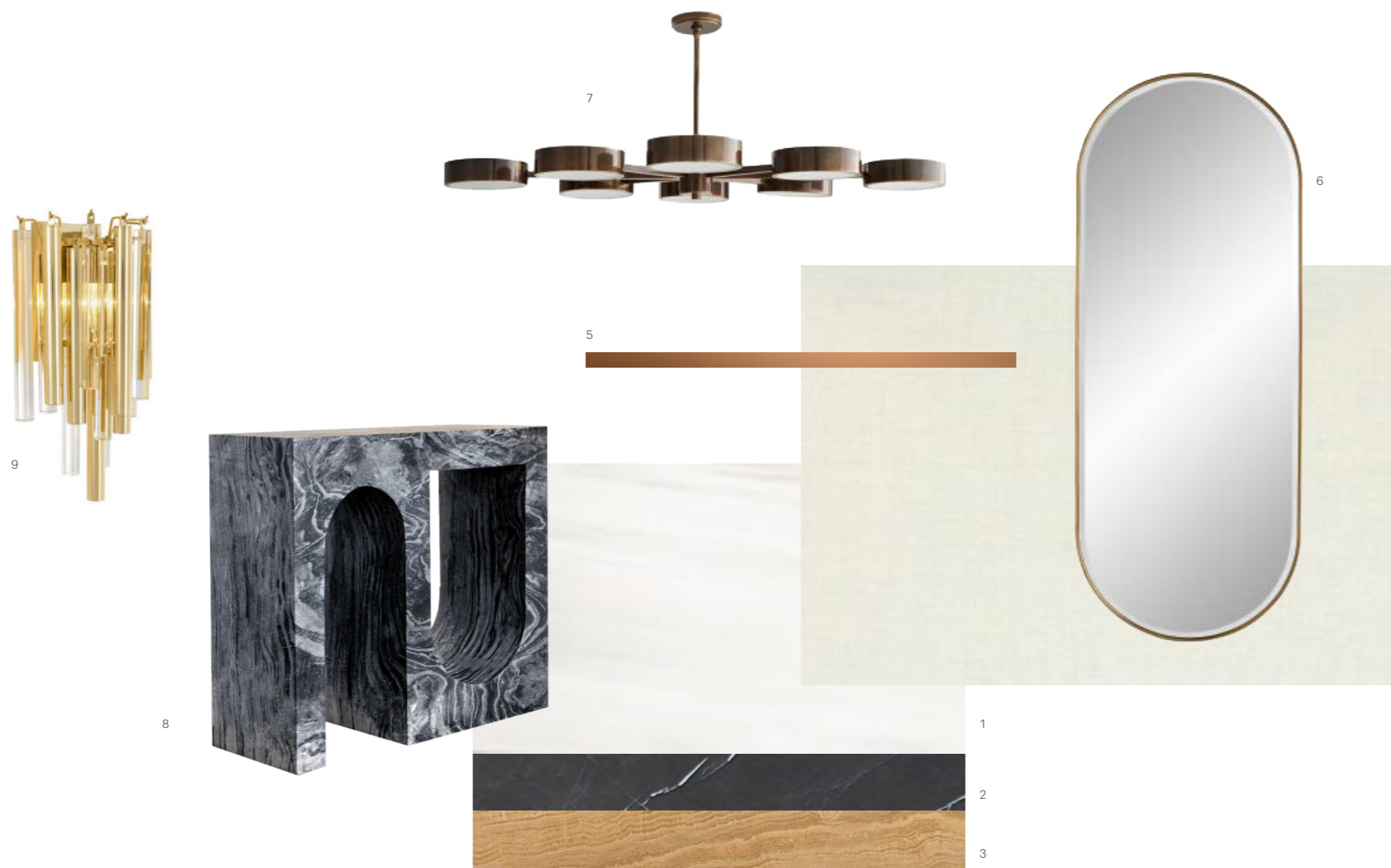
## Entrance-Corridor-Cloak room

- 1 Console with artwork
- 2 Mirror
- 3 Marble decorative floor
- 4 Marble «Ariston» or «Bianco dolomite» or similar
- 5 Wall sconces



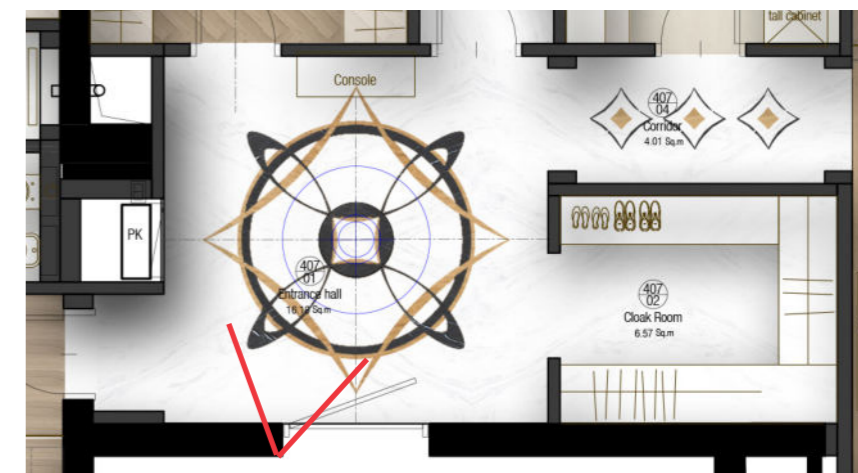


# Mood



- 1 MARBLE «ARISTON» OR «BIANCO DOLOMITI» OR SIMILAR
- 2 MARBLE «GREY STONE», POLISHED FIN.
- 3 TRAVERTINE «VELLUTO», POLISHED FIN.
- 4 WALL COVERING SILK BY VESCOM
- 5 CHROME METAL BRONZE COL.

- 6 MIRROR «VAQUERO» BY ARTERIORS
- 7 CHANDELIER «LINUS STARBURST» BY ARTERIORS
- 8 MARBLE CONSOLE BESPOKE
- 9 WALL SCONCES EICHHOLTZ

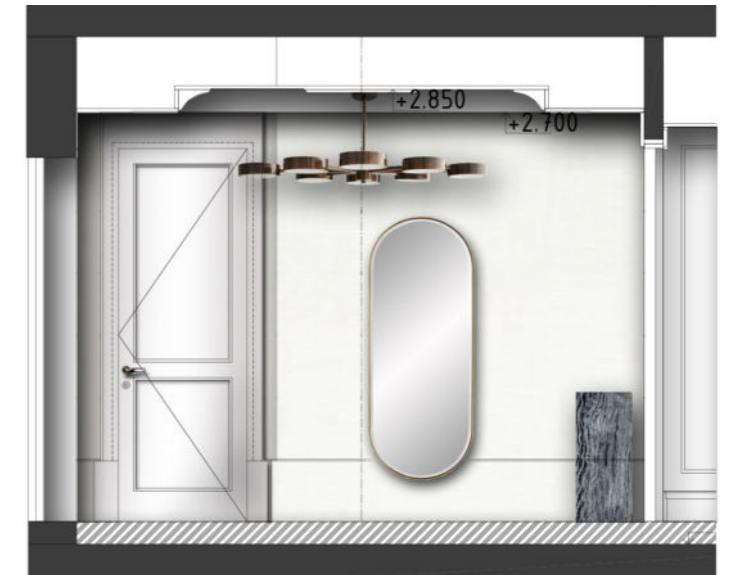




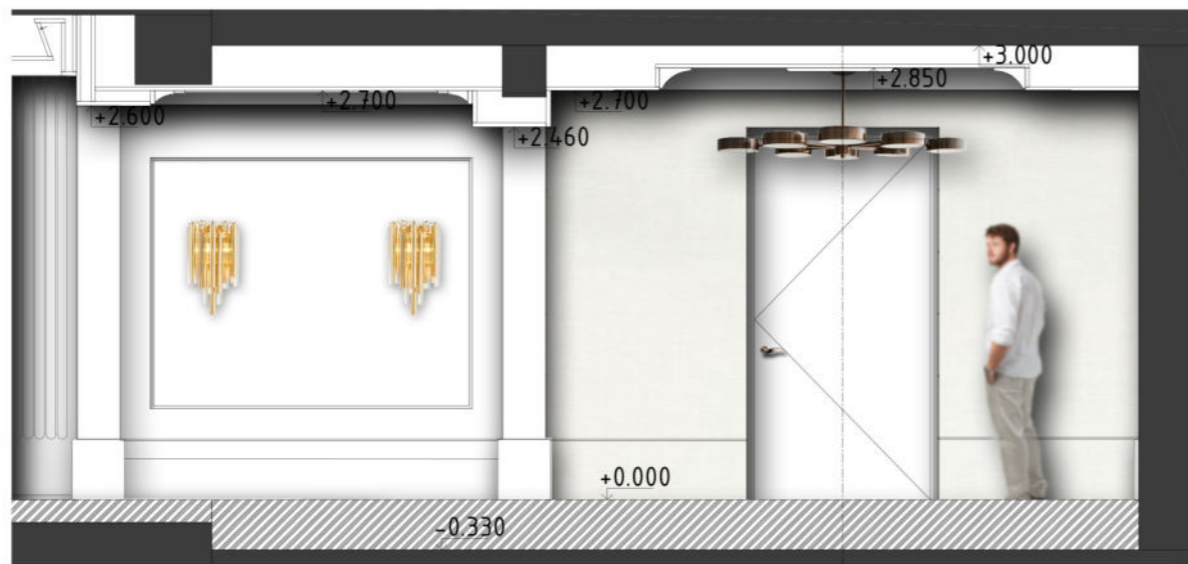
ELEVATION D



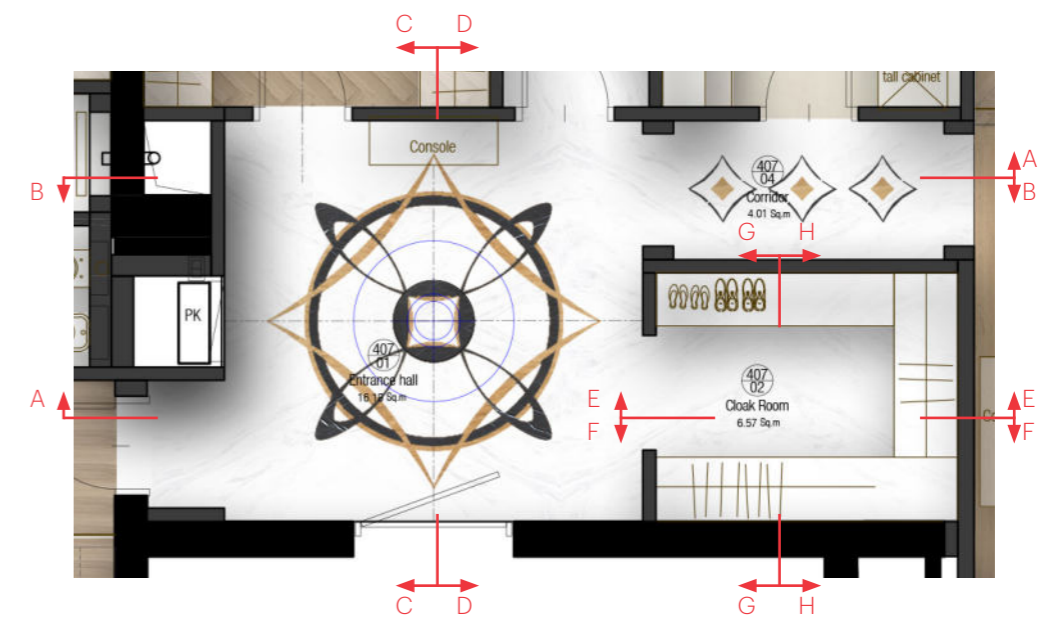
ELEVATION D

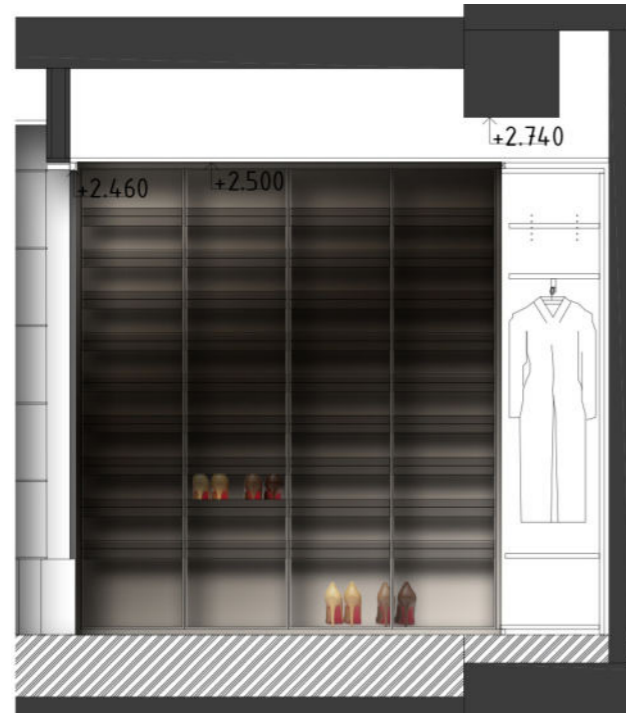


ELEVATION D

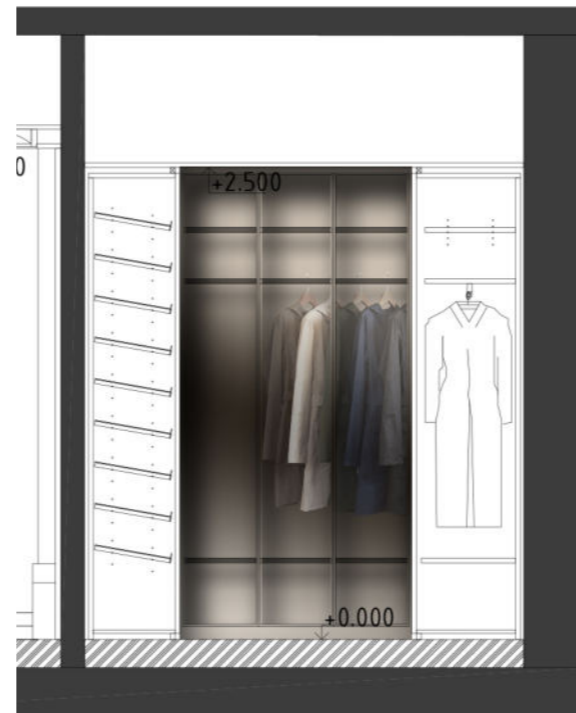


ELEVATION B





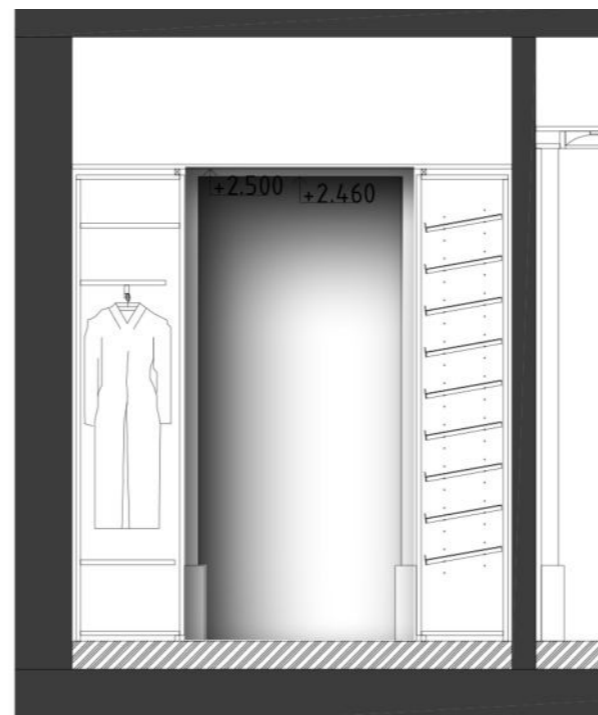
ELEVATION E



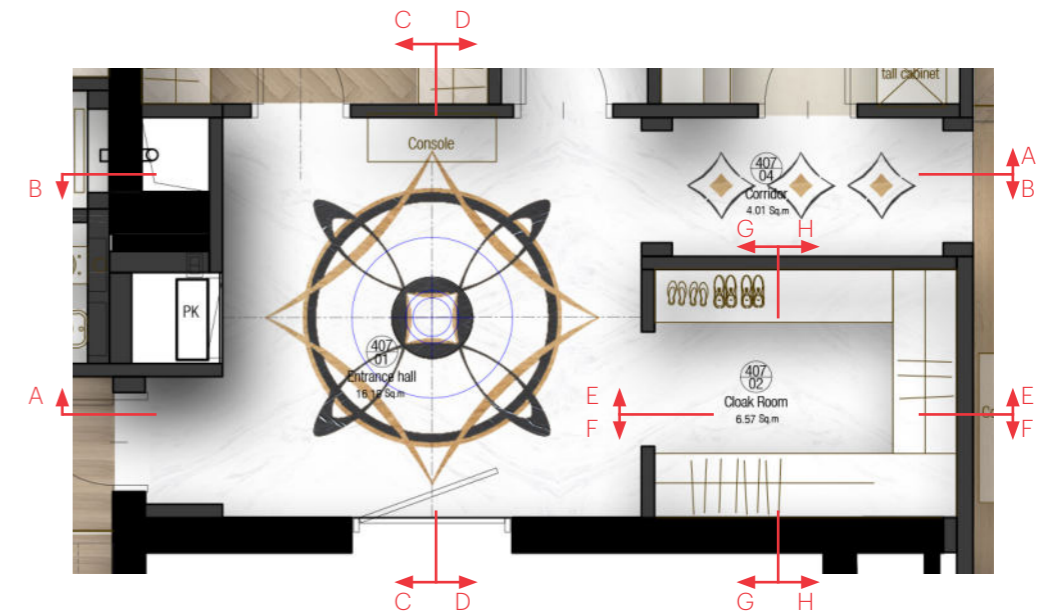
ELEVATION H



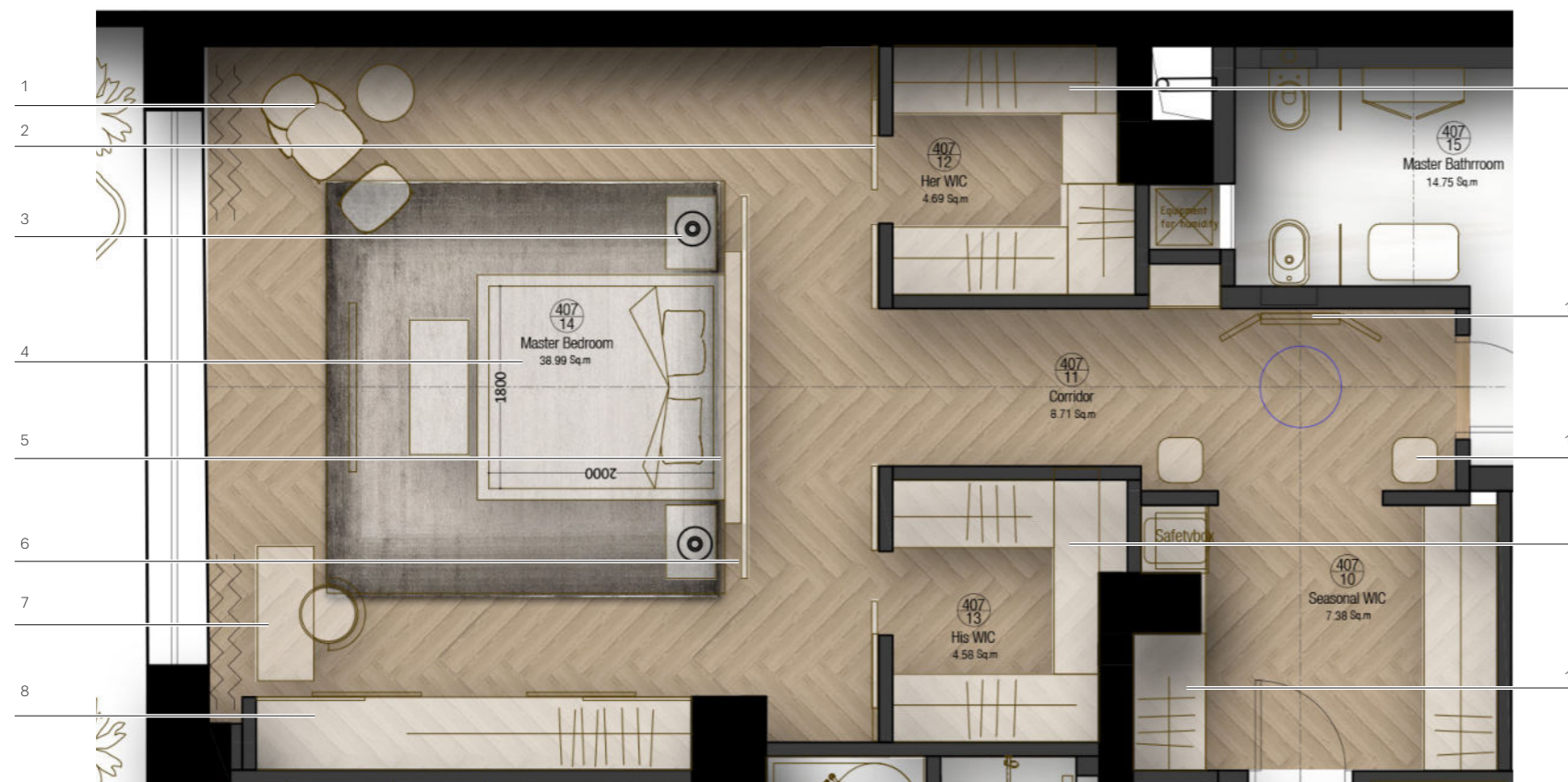
ELEVATION F



ELEVATION G



## Master bedroom-WIC



- 1 Armchair with foot rest
- 2 Sliding glass door
- 3 Side table with lamp
- 4 Bed
- 5 Headboard
- 6 See through partition
- 7 Vanity
- 8 Coplaner wardrobe
- 9 Open wardrobe
- 10 Tall mirror
- 11 Pouff
- 12 Wardrobe with bronzed glass door

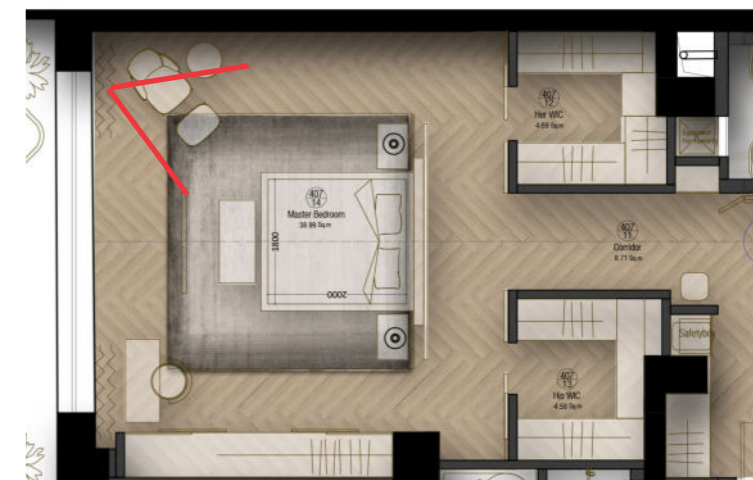
# Mood (Master bedroom)



- 1 BRUSHED STAINED OAK PARQUET
- 2 LAYERED GLASS SLIDING DOOR
- 3 WHITE GYPSUM WALL PANELING
- 4 METAL PARTITION
- 5 BED «DEVONA SUPER KING» BY THEODORE ALEXANDER

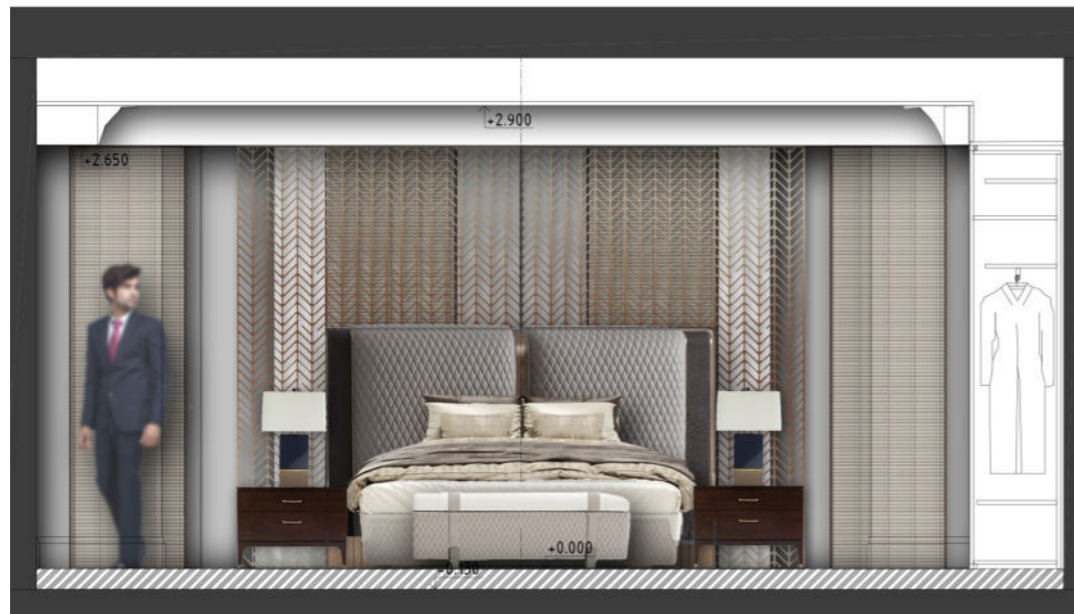
- 6 SIDE TABLE «DELANO» BY SELVA
- 7 BENCH «GRAND» BY CAPITAL COLLECTION
- 8 TABLE LAMP «REMBRANDT» BY ARTERIORS
- 9 ARMCHAIR «DARING AND DYNAMIC» BY HAMILTON C.P.
- 10 CHAIR «HILLIARD» BY THE SOFA AND CHAIR

- 11 DESK «DOWNTOWN» BY SELVA
- 12 FLOOR LAMP «NORMAN» BY ARTERIORS





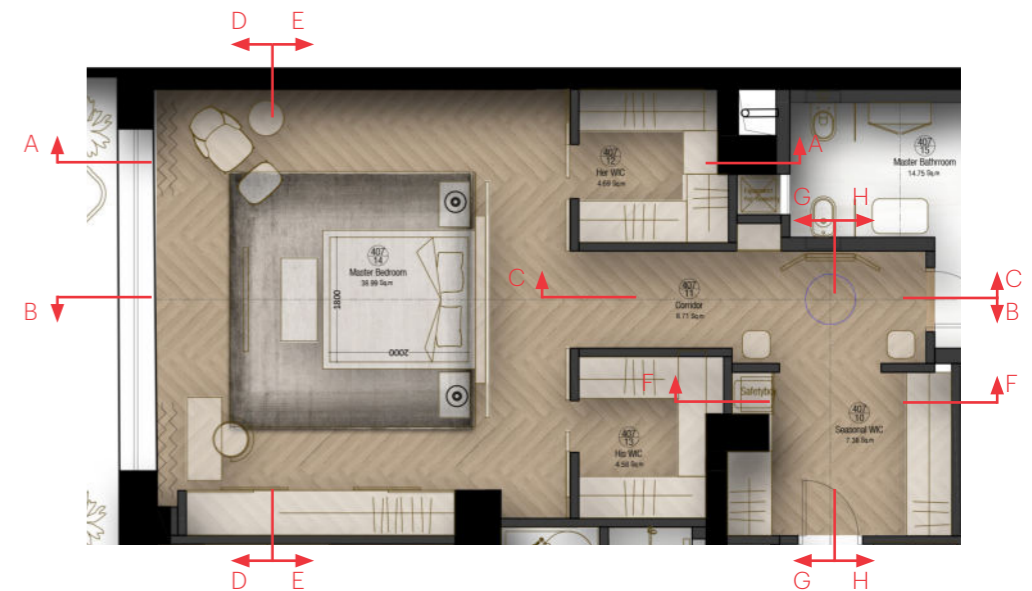
ELEVATION B



ELEVATION E



ELEVATION D





# Mood (Seasonal WIC-WIC)

His/Her WIC



Seasonal WIC



- 1 WENGÉ OR OAK STAINED WENGÉ COLOUR FOR SHELVES.
- 2 FAKE NUBUK FOR BACK WALL
- 3 WENGÉ OR OAK STAINED WENGÉ COLOUR FOR STRUCTURE

- 4 BRONZED GLASS DOOR WITH AL. OR TIMBER FRAME

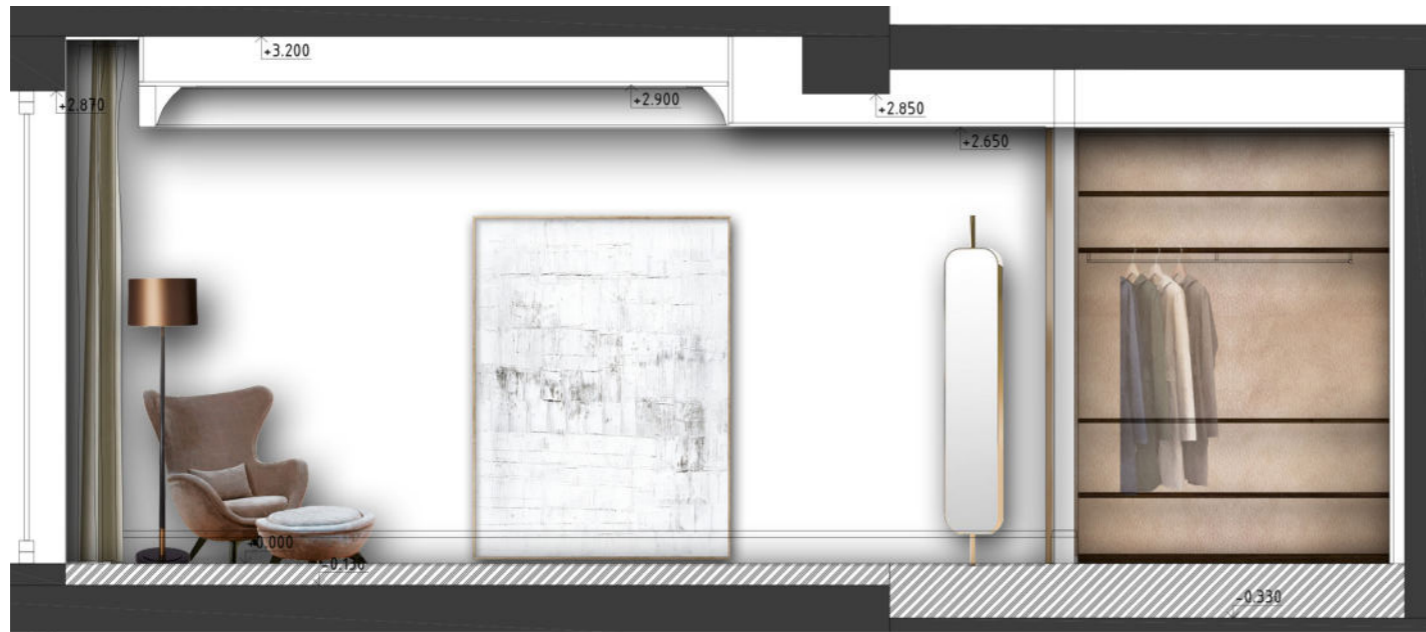
# Mood (Corridor)

---

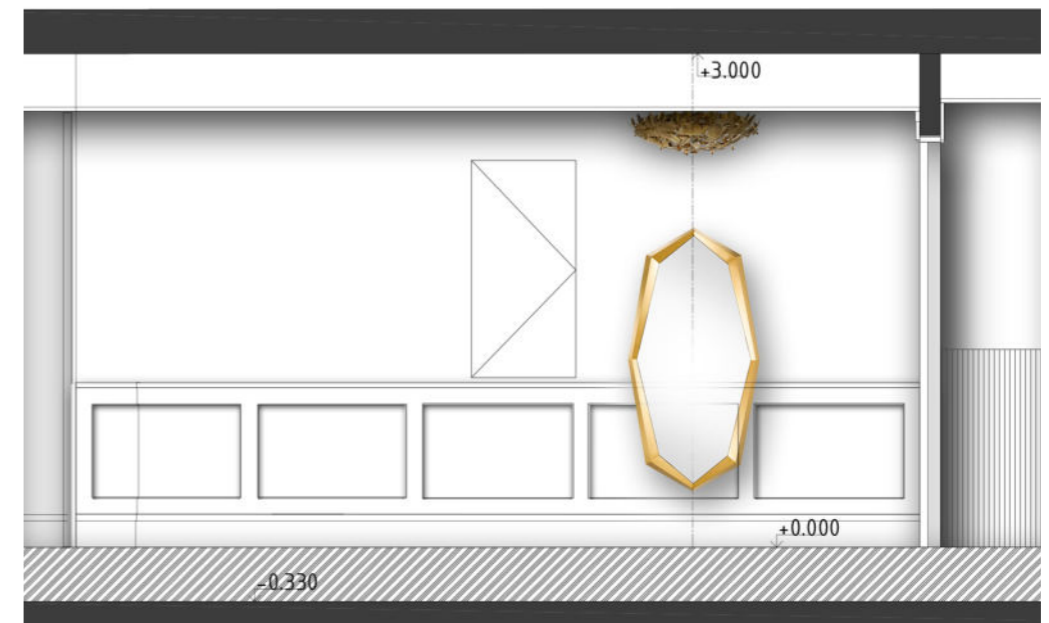


- 
- 1 BRUSHED STAINED OAK PARQUET
  - 2 LAYERED GLASS SLIDING DOOR
  - 3 WHITE GYPSUM WALL PANELING
  - 4 MIRROR «DIAMOND» BY EICHHOLTZ
  - 5 POUFF LA FIBULE

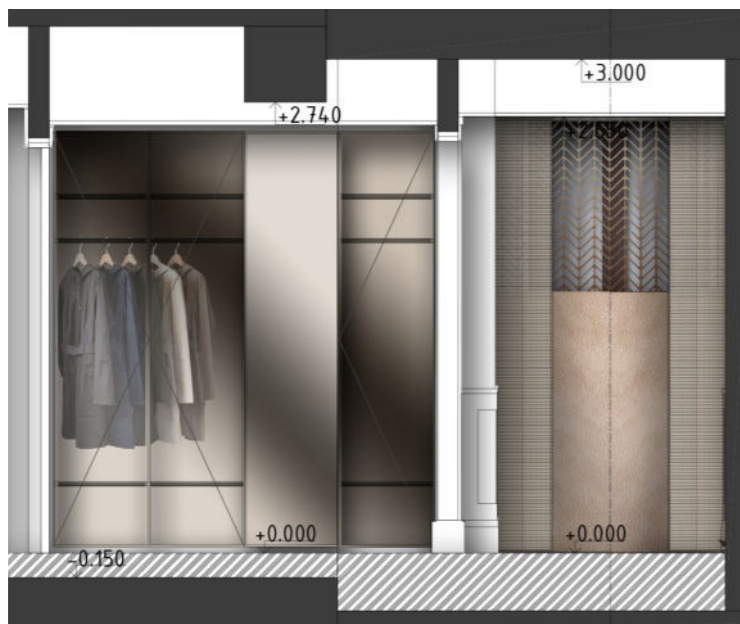
- 6 WALL SCONCE «SPARKS L» BY EICHHOLTZ
- 7 CEILING LAMP «MCQUEEN» BY LUXXU



ELEVATION A



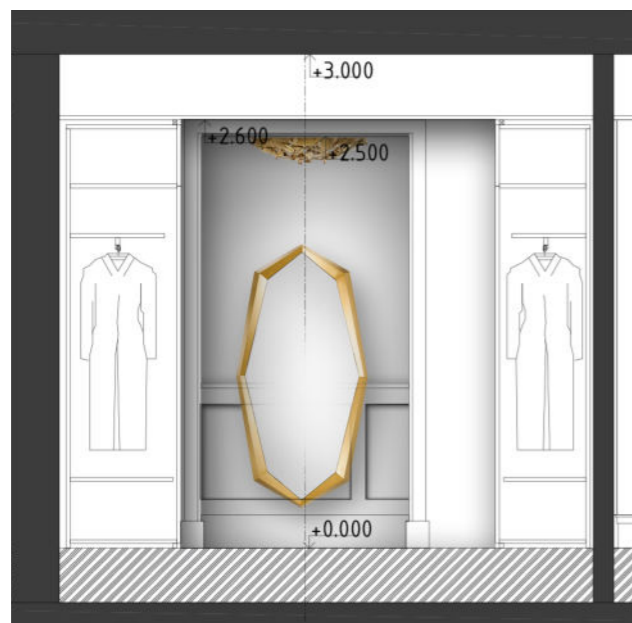
ELEVATION C



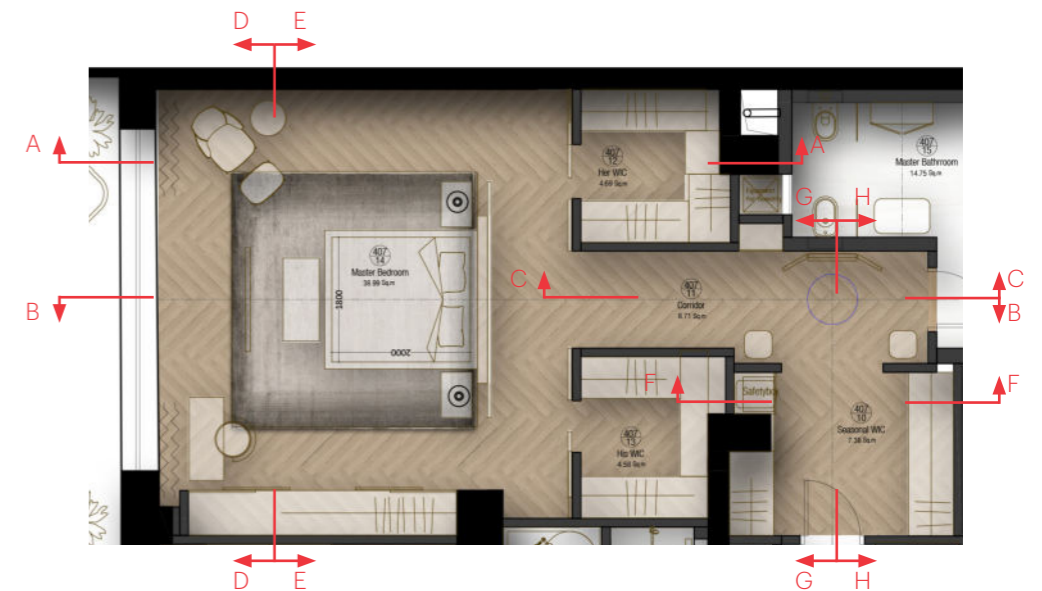
ELEVATION G



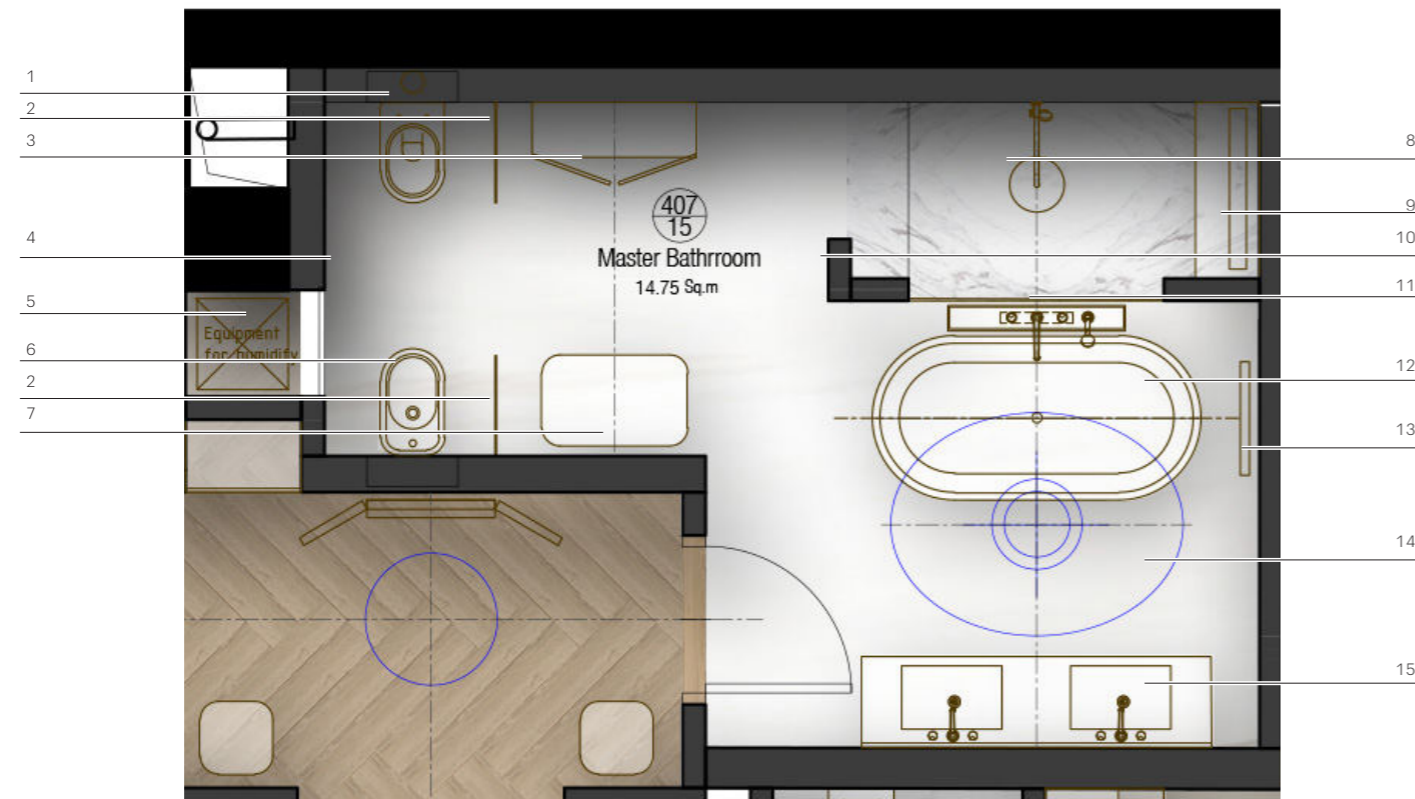
ELEVATION H



ELEVATION F

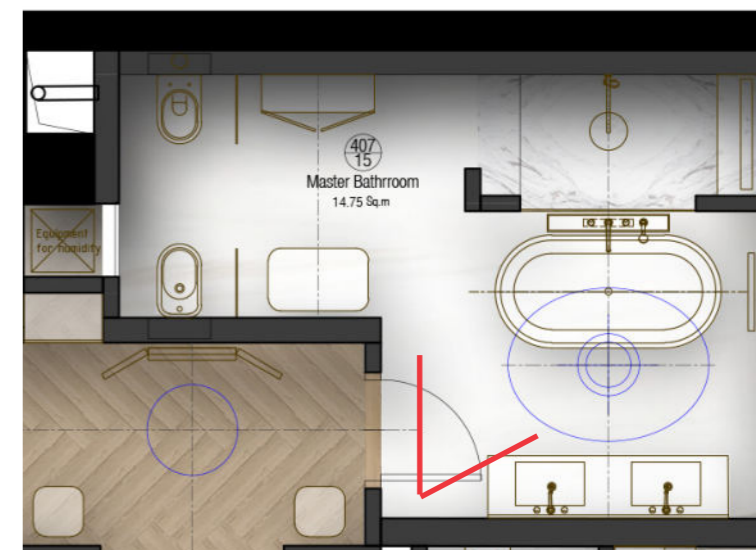


## Master bathroom



- 1 WC
- 2 Glass partition sandblasted
- 3 Cabinet with mirror
- 4 Decorative mirror with S/S frame
- 5 Humidify equipment
- 6 Bidet
- 7 Bench
- 8 Shower area in marble «Volakas»
- 9 Marble bench
- 10 Pearl film inserted mirror with S/S frame
- 11 Sandblasted glass
- 12 Freestanding bathtub
- 13 Towel radiator
- 14 Floor in marble «Bianco Dolomiti» or «Ariston» floor, polished
- 15 Vanity in marble «Bianco Dolomiti» or «Ariston» , polished







ELEVATION A



ELEVATION F



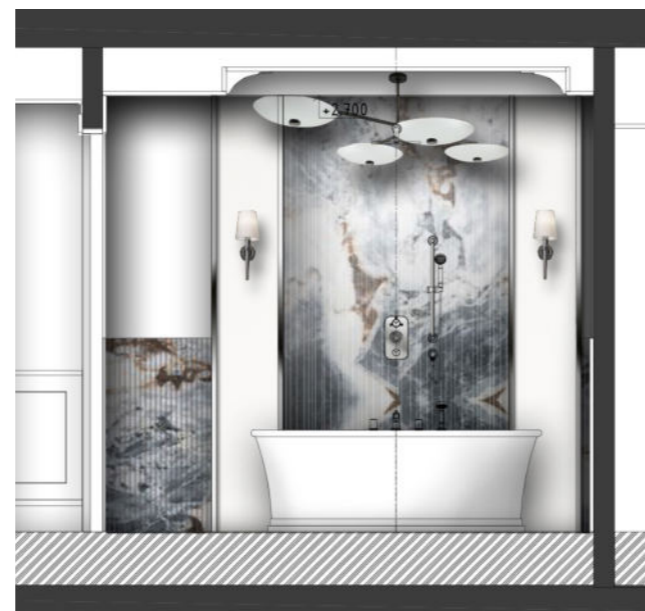
ELEVATION B



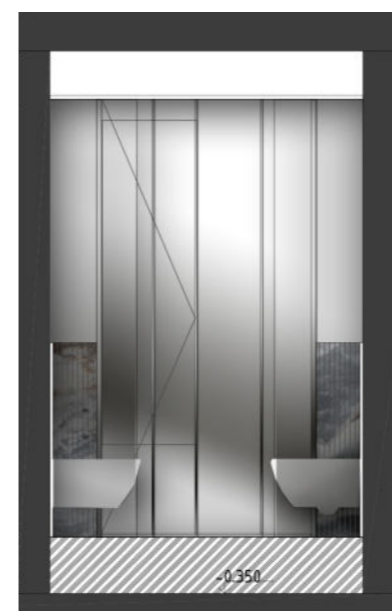
ELEVATION G



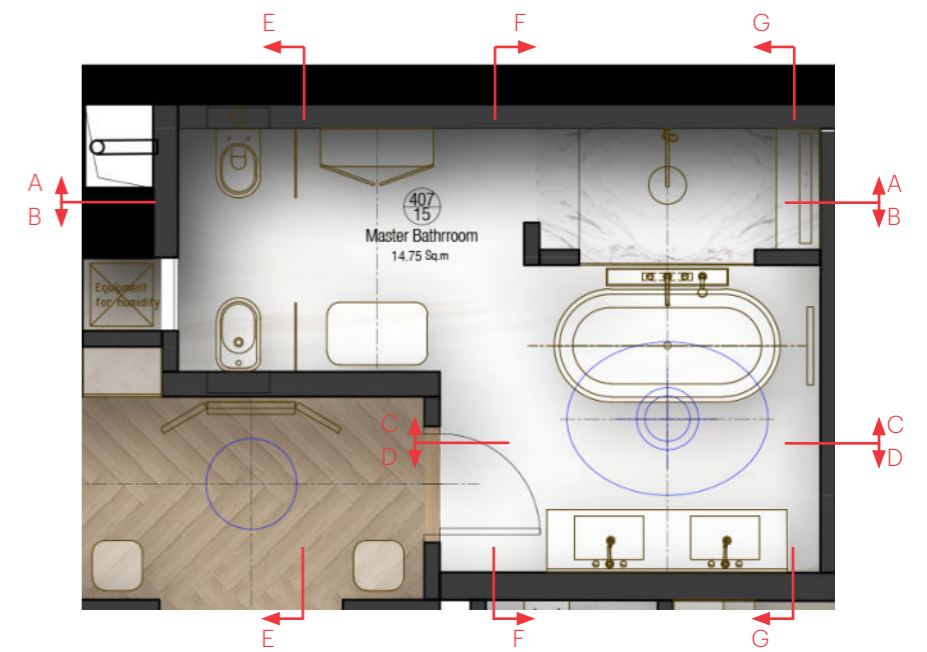
ELEVATION D



ELEVATION C



ELEVATION E



# Second bedroom (Office)

- 1 Work desk with side cabinet
- 2 Library
- 3 Wardrobe
- 4 Glass partition
- 5 Low cabinet





# Mood



4



3



2



1

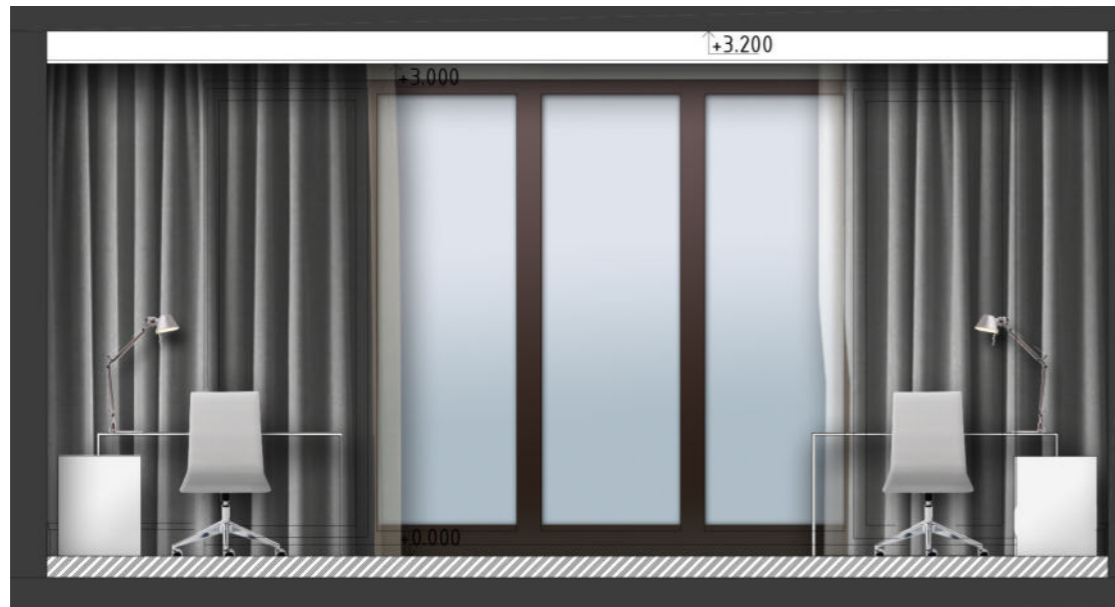
4

5

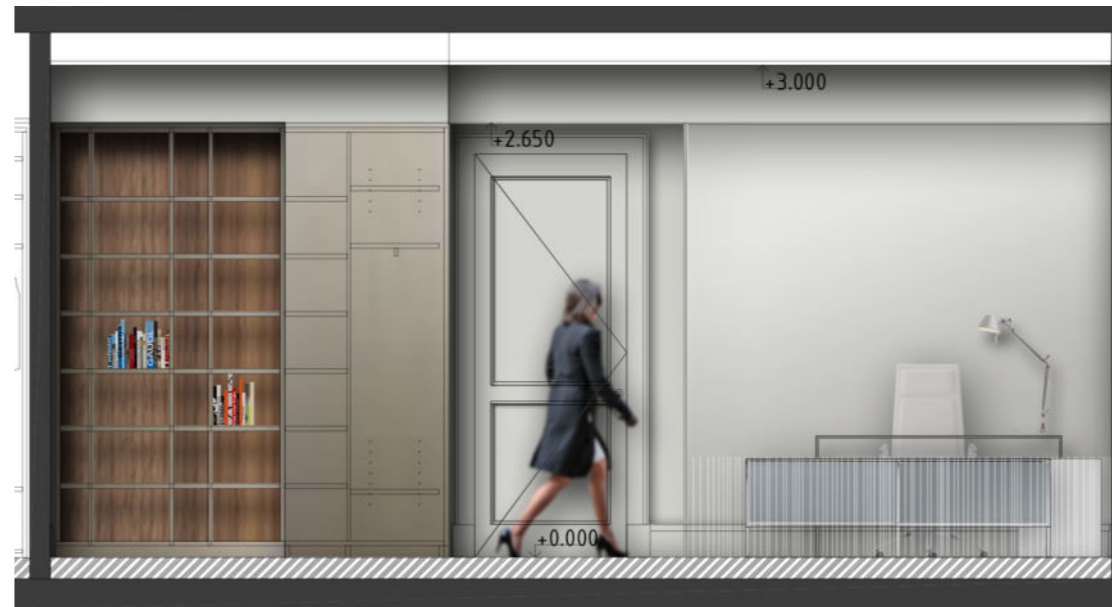
- 1 BRUSHED STAINED OAK PARQUET
- 2 AMERICAN WALNUT MATT FIN.
- 3 BRASS PAINTED TIMBER
- 4 WORK DESK WITH SIDE TABLE «AIR DESK» BY GALLOTTI RADICE

- 5 LOW CABINET «ERMINIA» BY GALLOTTI RADICE

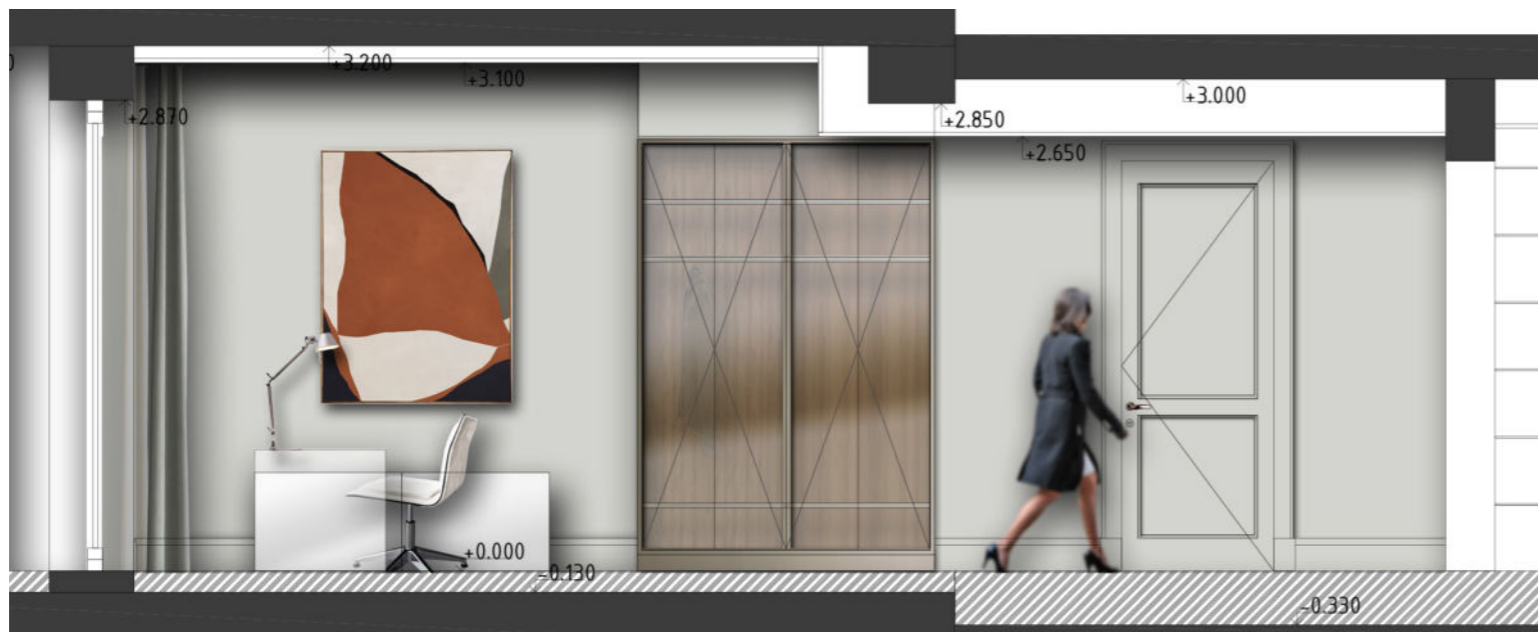




ELEVATION C



ELEVATION D



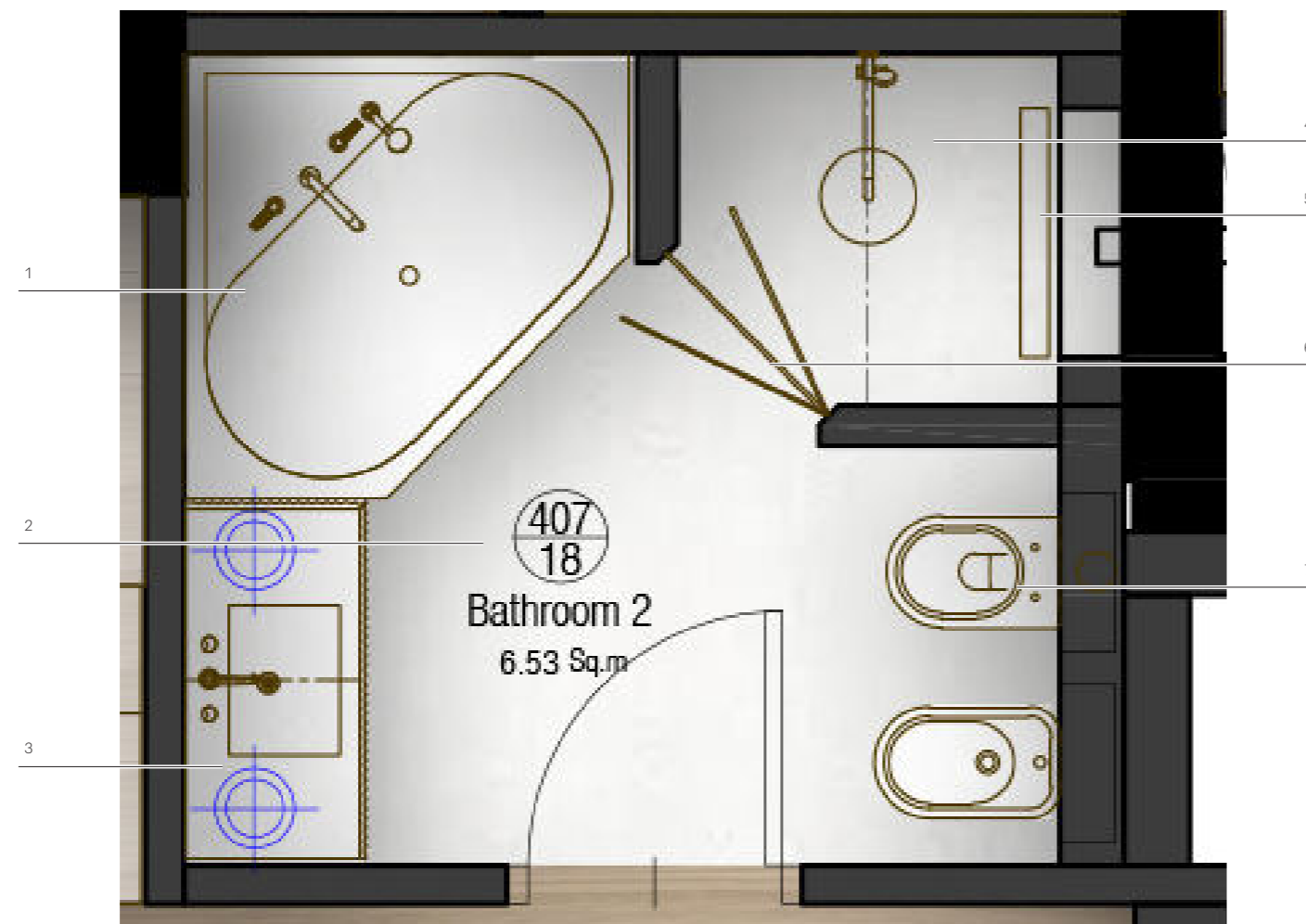
ELEVATION A



ELEVATION B



## Second bathroom



- 1 Bathtub
- 2 Ceramic «Thassos» Ariostea
- 3 Vanity in marble «Breccia Capraia» polished fin.
- 4 Shower
- 5 Shower wall in ceramic «Capraia» Ariostea polished fin.
- 6 Glass door
- 7 WC & Bidet

# Mood

---

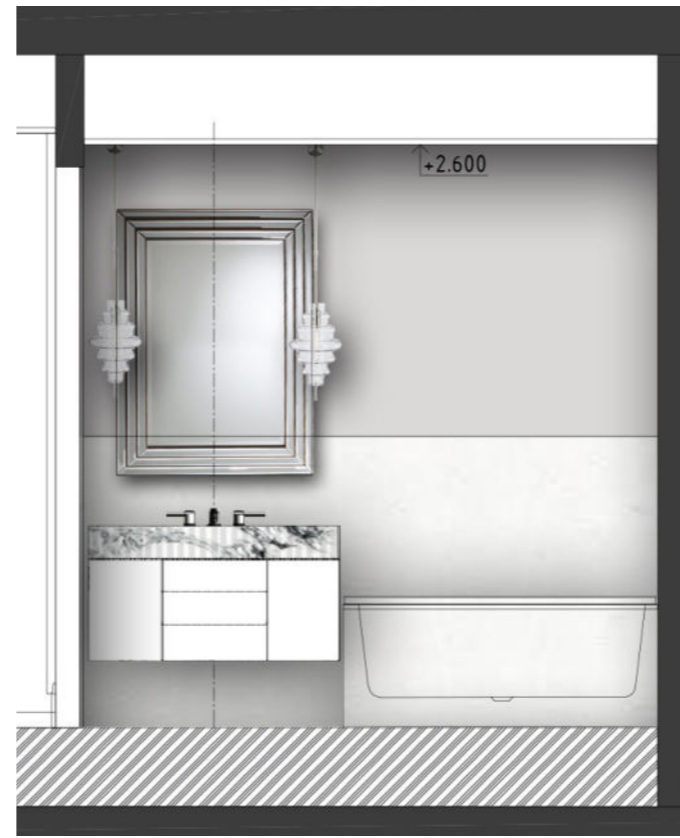


- 
- 1 CERAMIC ARIOSTEA ULTRA MARMÌ «THASSOS»
  - 2 TAP «METROPOL» BY HANS GROHE
  - 3 BATHTUB «D-CODE» DURAVIT
  - 4 CERAMIC ARIOSTEA ULTRA MARMÌ «CAPRAIA»
  - 5 MIRROR «CHAMBERY BRONZE» BY ART&ACCESSORIES

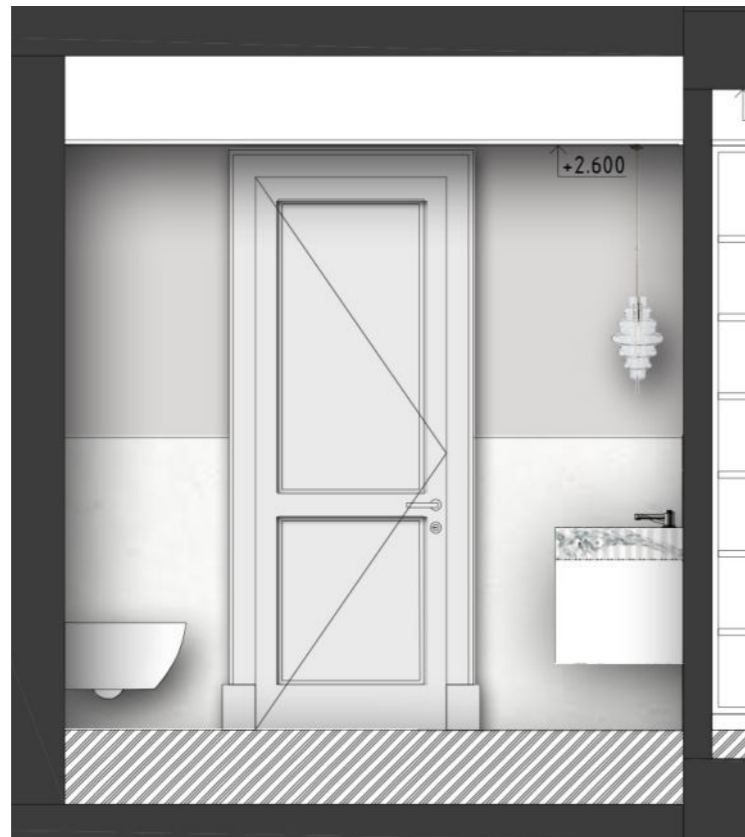
- 6 WC & BIDET «NEW FLUSH» BY CATALANO, SATIN CEMENT COLOUR



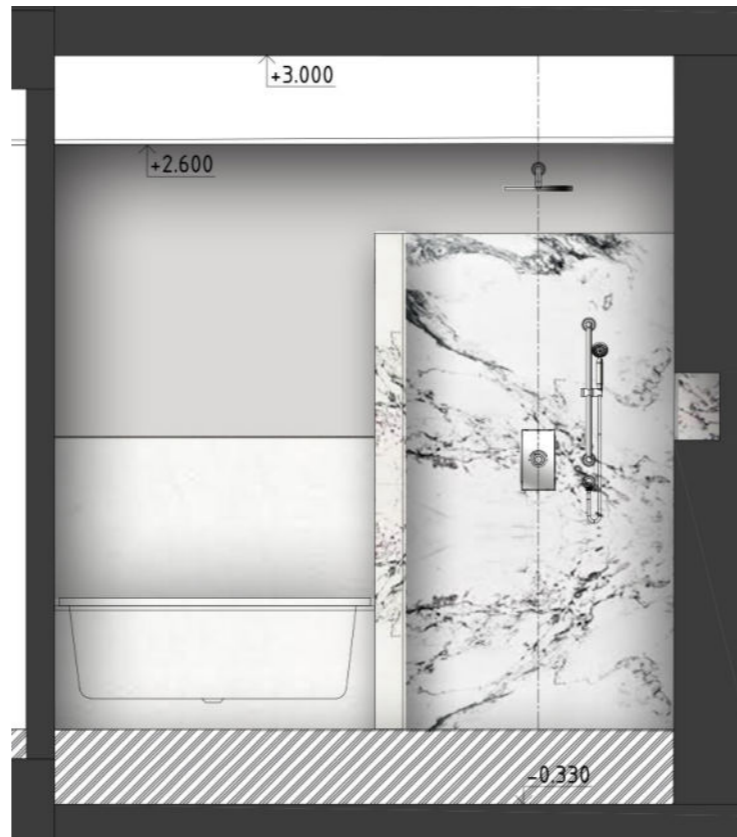
ELEVATION D



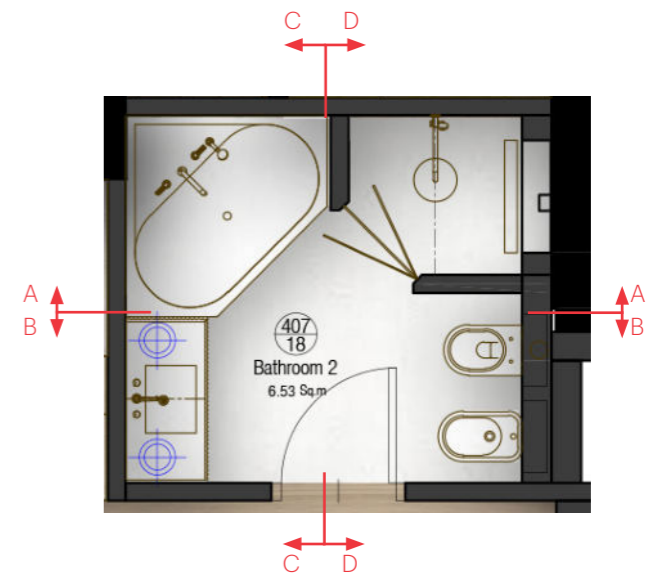
ELEVATION C



ELEVATION B



ELEVATION A



## Powder room



- 1 WC
- 2 Bronzed mirror in gypsum paneling
- 3 Ceramic «Bianco Covelano» Ariostea
- 4 Vanity in marble «Ariston» or «Bianco Dolomiti»
- 5 Wall in mosaic

# Mood



- 1 CERAMIC «BIANCO COVELANO» ARIOSTEA
- 2 BRASS INSET MOSAIC «STUDIO LINE» BY NEW RAVENNA
- 3 WC «NEWFLUSH» BY CATALANO
- 4 MIRROR «ARTUTO CHAMPAGNA» BY ART & ACCESSORIES
- 5 WALL SCONCE «HAMPTON» BY ARTERIORS

- 6 BRONZE MIRROR
- 7 WHITE GYPSUM PANELING

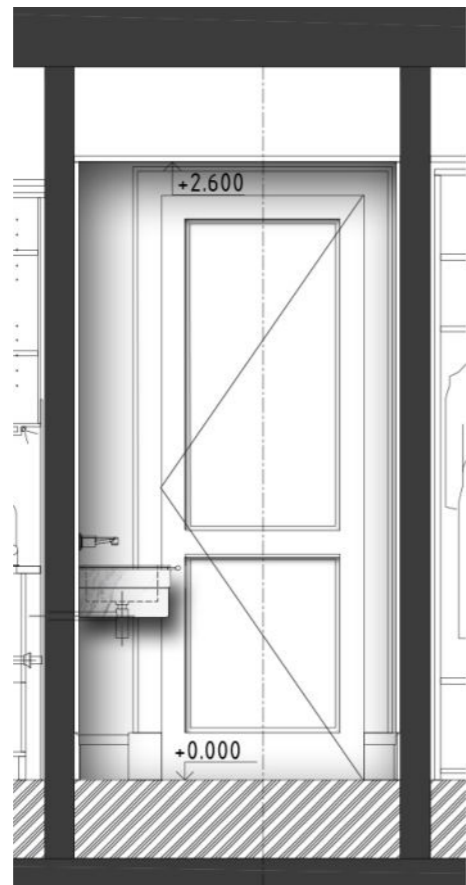




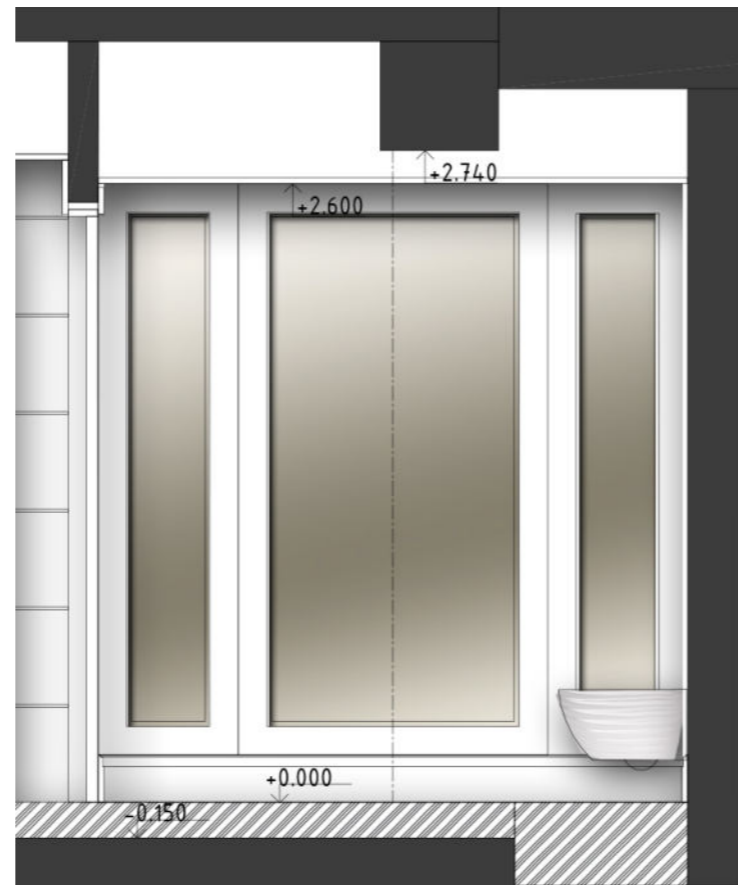
ELEVATION A



ELEVATION D



ELEVATION B



ELEVATION C



## Laundry - Pantry

- 1 Rack for washing machine and dryer
- 2 Top with washbasin and upper cabinet
- 3 Tall cabinet for cleaning items
- 4 Open shelves



# Mood

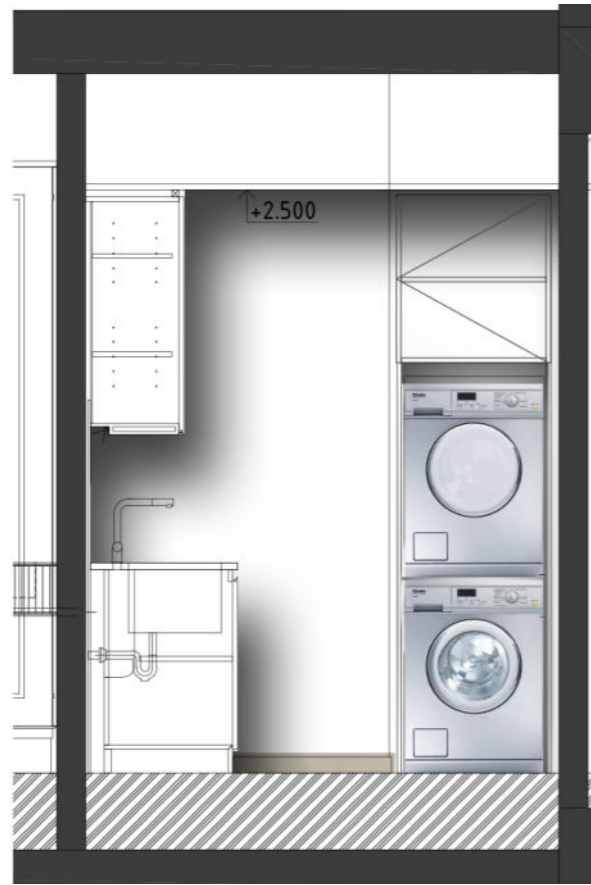
---



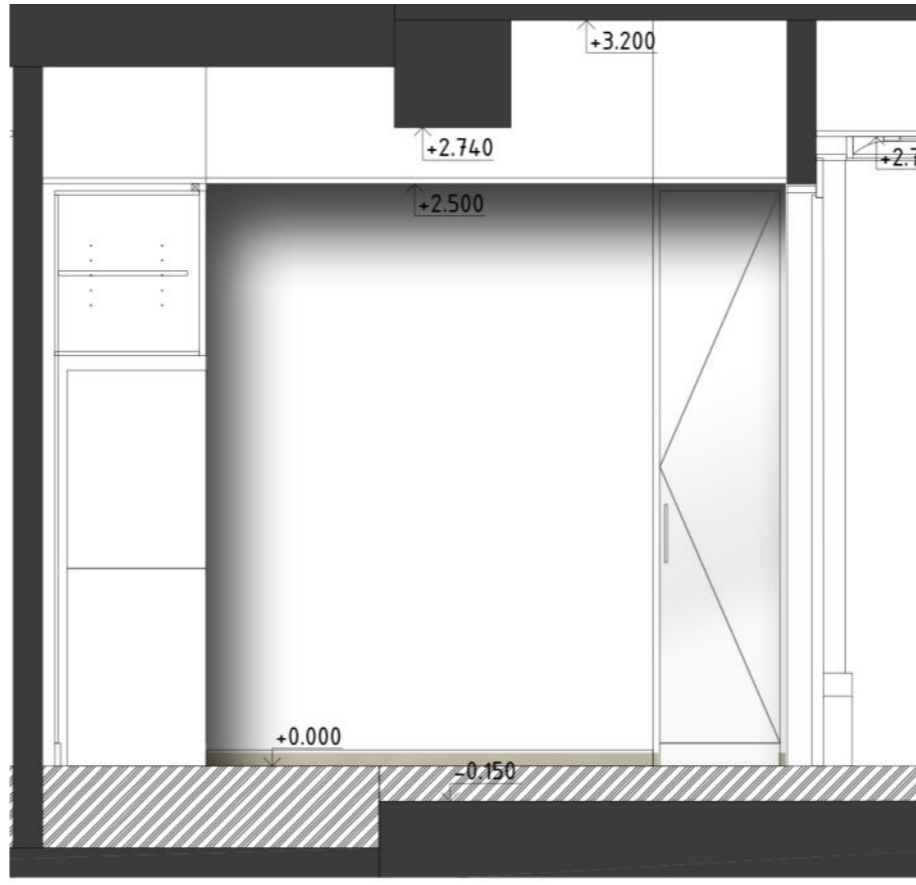
2

1

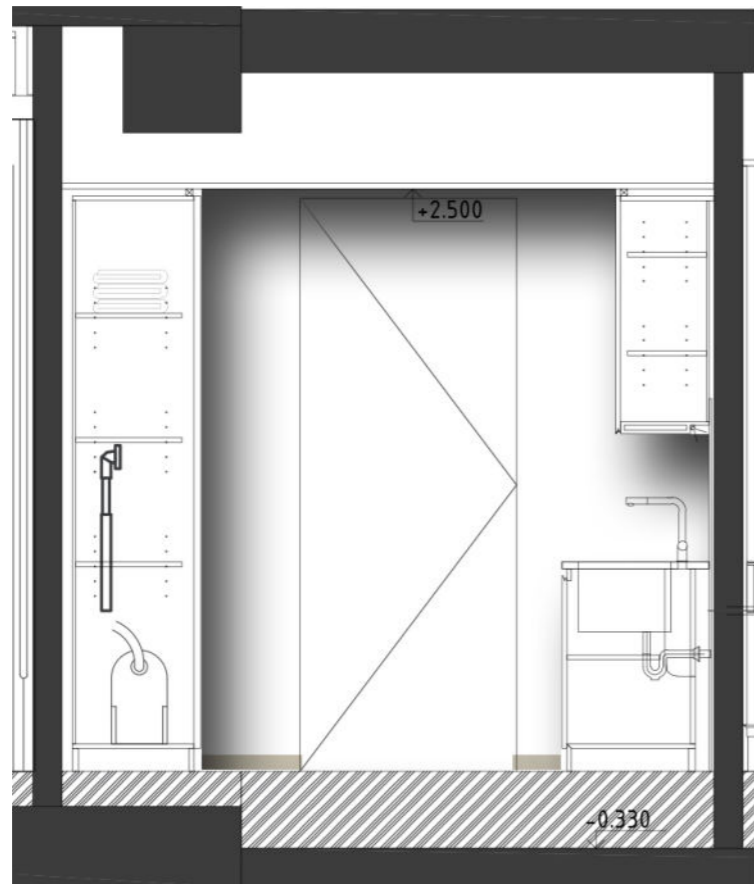
- 
- 1 CERAMIC TILE «KREO BEIGE» BY IRIS CERAMICA
  - 2 TIMBER PANEL IN LAMINATE «W1000» BY EGGER



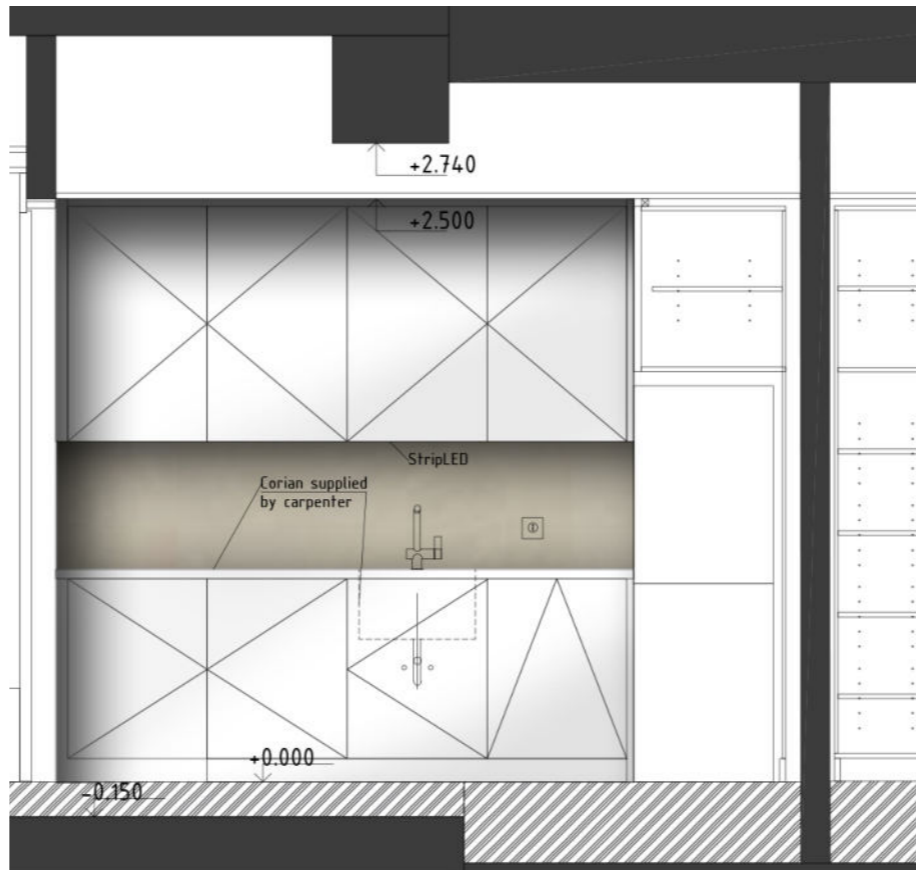
ELEVATION A



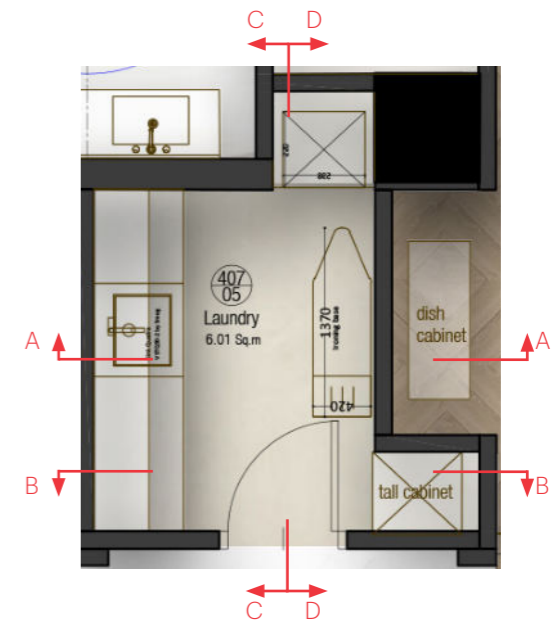
ELEVATION D



ELEVATION B



ELEVATION C



# Ironmongery

---



- 
- 1 DOOR HANDLE OLIVARI VOLA, FIN. «CR»
  - 2 SOCKET, SWITCH «EPURE» BY ART D' ARNOULD FIN «ACIER MIROIR



**Head office**

Via C.Tolomeo 38,  
52100 Arezzo, Italy  
tel. + 39 0575 904016

**Moscow office**

Soymonovskiy pr. 7/1 of. 7

119034 Moscow, Russia  
tel. +7 495 7822856